

**Z terminal with tension spring connection
ZDU 4-2/2AN**

Weidmüller Interface GmbH & Co. KG
Klingenbergstraße 16
D-32758 Detmold
Germany
Fon: +49 5231 14-0
Fax: +49 5231 14-292083
www.weidmueller.com



Terminal blocks in tension clamp system and the Z Series are specially customised to the customers' requirements. Less space, spacious labelling area, integrated test point, cross-connection functionality within the Z Series and another family of terminals by Weidmüller. Z-Series terminals have a large clamping range and one or two cross-connection slots. Plug-in standard cross-connections enable potentials to be distributed over any number of terminals.

General ordering data

| | |
|------------|--|
| Type | ZDU 4-2/2AN |
| Order No. | 1770370000 |
| Version | Z terminal with tension spring connection, Feed-through terminal, Rated cross-section: Tension clamp connection, Wemid, Dark Beige |
| GTIN (EAN) | 4032248143177 |
| Qty. | 100 pc(s). |

**Z terminal with tension spring connection
ZDU 4-2/2AN**

Weidmüller Interface GmbH & Co. KG
Klingenbergstraße 16
D-32758 Detmold
Germany
Fon: +49 5231 14-0
Fax: +49 5231 14-292083
www.weidmueller.com

Technical data
Dimensions and weights

| | | | |
|------------|---------|--------------------------|--------|
| Length | 61.5 mm | Width | 6.1 mm |
| Height | 45.5 mm | Height of lowest version | 46 mm |
| Net weight | 8.93 g | | |

Temperatures

| | | | |
|----------------------------------|--------|----------------------------------|--------|
| Operating temperature | | Storage temperature | |
| Continuous operating temp., min. | -50 °C | Continuous operating temp., max. | 120 °C |

Rated data IECEx/ATEX

| | | | |
|---------------------------|--------------------------|--------------------------------|---|
| Certificate No. (ATEX) | KEMA97ATEX4677U | ATEX certificate | KEMA97ATEX4677U_d.pdf |
| ATEX certificate | KEMA97ATEX4677U_e.pdf | Max. voltage (ATEX) | 550 V |
| Current (ATEX) | 28 A | Wire cross section max. (ATEX) | 4 mm ² |
| Voltage, cross-connection | | Operating temperature range | For operating temperature range see EC Design Test Certificate / IEC Ex-Certificate of Conformity |
| | CrossConnectionGuide.pdf | | |
| Marking EN 60079-7 | Ex e II | Marking ATEX Directive 94/9/EC | II 2 G D |

Additional technical data

| | | | |
|--------------------------|--|-----------------------------|---------|
| Explosion-tested version | Yes | Number of similar terminals | 1 |
| Open sides | right | Type of mounting | Snap-on |
| Version | Tension-clamp connection, for plug-in cross-connector, One end without connector | | |

CSA ratings data

| | | | |
|-------------------------------|----------------|-------------------------------|--------|
| Certificate No. (CSA) | 200039-1152892 | Voltage size B (CSA) | 600 V |
| Voltage size C (CSA) | 600 V | Voltage size D (CSA) | 600 V |
| Current size B (CSA) | 35 A | Current size C (CSA) | 35 A |
| Current size D (CSA) | 5 A | Wire cross section max. (CSA) | 10 AWG |
| Wire cross section min. (CSA) | 26 AWG | | |

Clampable wires (additional connection)

| | | | |
|---|---------------------|---|-------------------|
| Conductor cross-section, flexible plus plastic collar DIN 46228/1, further connection, min. | 0.5 mm ² | Conductor cross-section, flexible plus plastic collar DIN 46228/1, further connection, max. | 4 mm ² |
|---|---------------------|---|-------------------|

**Z terminal with tension spring connection
ZDU 4-2/2AN**

Weidmüller Interface GmbH & Co. KG
 Klingenbergstraße 16
 D-32758 Detmold
 Germany
 Fon: +49 5231 14-0
 Fax: +49 5231 14-292083
 www.weidmueller.com

Technical data**Clampable wires (rated connection)**

| | | | |
|---|--------------------------|---|----------------------|
| Type of connection | Tension clamp connection | Stripping length | 10 mm |
| Blade size | 0.6 x 3.5 mm | Connection direction | Inclined / angled |
| Number of connections | 2 | Clamping range, rated connection, min. | 0.13 mm ² |
| Clamping range, rated connection, max. | 6 mm ² | Gauge to IEC 60947-1 | A3 |
| Wire connection cross section, solid core, max. rated connection | 0.5 mm ² | Wire connection cross section, solid core max. rated connection | 6 mm ² |
| Wire connection cross section, finely stranded, max. | 4 mm ² | Wire connection cross-section, finely stranded, min. | 0.5 mm ² |
| Wire connection cross section, finely stranded with wire-end ferrules DIN 46228/1, rated connection, min. | 0.5 mm ² | Wire connection cross section, finely stranded with wire-end ferrules DIN 46228/1, rated connection, max. | 4 mm ² |
| Cross-section for connected conductor, finely stranded with wire-end ferrules and plastic collars DIN 46228/4, rated connection, min. | 0.5 mm ² | Wire connection cross-section, finely stranded with wire-end ferrules and plastic collars DIN 46228/4, rated connection, max. | 4 mm ² |
| Twin wire-end ferrules, min. | 0.5 mm ² | Twin wire-end ferrules, max. | 1.5 mm ² |
| Wire connection cross section AWG, min. | AWG 26 | Wire connection cross section AWG, max. | AWG 10 |

Dimensions

| | |
|--------------|---------|
| TS 35 offset | 50.5 mm |
|--------------|---------|

Rated data

| | | | |
|---------------|---------------|---------------------------------|------|
| Rated voltage | 800 V | Rated impulse withstand voltage | 8 kV |
| Rated current | 32 A | Current at maximum wires | 32 A |
| Standards | IEC 60947-7-1 | Pollution severity | 3 |

UL ratings data

| | | | |
|---|--------|---|--------|
| Certificate No. (UR) | E60693 | Voltage size C (UR) | 600 V |
| Current size C (UR) | 33 A | Conductor size Factory wiring max. (UR) | 10 AWG |
| Conductor size Factory wiring min. (UR) | 26 AWG | Conductor size Field wiring max. (UR) | 10 AWG |

Material data

| | | | |
|---------------------|------------|---------------------------|-------|
| Insulating material | Wemid | Material | Wemid |
| Colour | Dark Beige | UL 94 flammability rating | V-0 |

System specifications

| | | | |
|-----------------------------------|---|----------------------------------|--------------------------|
| Product family | Z terminal with tension spring connection | Type of connection | Tension clamp connection |
| Connection direction | Inclined / angled | Number of levels | 1 |
| Number of connections | 2 | No. of clamping points per level | 2 |
| Levels cross-connected internally | No | Mounting rail | TS 35 |
| End cover plate required | Yes | | |

Classifications

| | | | |
|------------|-------------|------------|-------------|
| ETIM 3.0 | EC000897 | UNSPSC | 30-21-18-11 |
| eClass 5.1 | 27-14-11-20 | eClass 6.2 | 27-14-11-20 |
| eClass 7.1 | 27-14-11-20 | | |

Data sheet**Z terminal with tension spring connection
ZDU 4-2/2AN**

Weidmüller Interface GmbH & Co. KG
Klingenbergstraße 16
D-32758 Detmold
Germany
Fon: +49 5231 14-0
Fax: +49 5231 14-292083
www.weidmueller.com

Technical data**Product information**

| | |
|--------------------------------|--|
| Descriptive text ordering data | Rated voltage is reduced to 400 V when using the cross-connector. |
| Descriptive text accessories | The rated voltage is decreased to 250 V when using the shielding rail LS 2.8 (1056400000). |

Approvals

Approvals



ROHS

Conform

**Z terminal with tension spring connection
ZDU 4-2/2AN**

Weidmüller Interface GmbH & Co. KG
Klingenbergstraße 16
D-32758 Detmold
Germany
Fon: +49 5231 14-0
Fax: +49 5231 14-292083
www.weidmueller.com

Accessories

Blank



WS markers are the perfect match for the W-series connectors. Thanks to their system compatibility, the WS tags can also be used with the I-series and the Z-series. The large marking surfaces do not only permit long character strings but also multi-line text. WS markers are ideal for labels with long, customised character strings. Thanks to the proven MultiCard format, printing with laser printer, PrintJet ADVANCED, plotter or MC-Mobilo is possible.

- Can be fitted in strips or individually
- Markers in proven MultiCard format

General ordering data

| Type | Order No. | Version | GTIN (EAN) | Qty. |
|-----------------------|----------------------------|--|---------------|------------|
| WS 12/6.5 MC NE WS | 1609920000 | Terminal markers, MultiCard, 12 x 6.5 mm, Polyamide 66, Colour: White | 4008190203511 | 540 pc(s). |

Blank



ZS markers - in proven MultiCard-format - have been developed specifically for the Z-series. They have a large printing area. The hinged mechanism even allows access to cross-connectors without dismantling. Quick installation is guaranteed by the fact that the single tags are clipped on in strips. The single tags are easy to separate.

- Hinged marker area
- Can be fitted in strips or individually
- Markers in proven MultiCard format

General ordering data

| Type | Order No. | Version | GTIN (EAN) | Qty. |
|---------------------|----------------------------|--|---------------|------------|
| ZS 12/6 MC NE WS | 1610020000 | Terminal markers, MultiCard, 12 x 6 mm, Polyamide 66, Colour: White | 4008190444600 | 400 pc(s). |

**Z terminal with tension spring connection
ZDU 4-2/2AN**

Weidmüller Interface GmbH & Co. KG
Klingenbergstraße 16
D-32758 Detmold
Germany
Fon: +49 5231 14-0
Fax: +49 5231 14-292083
www.weidmueller.com

Accessories
Custom printing


The dekafix (DEK) marker is the universal marker for all conductor and plug-in connectors as well as for electronic sub-assemblies. The system is ideal for short number sequences and covers a large range of ready-printed markers.

Strips for fast installation in one work step. The printing is easy to read, rich in contrast, and is available in five widths.

- Large range of ready-to-use markers
- Strips for fast installation
- Connector markers, suitable for all Weidmüller cable connectors
- Available as blank cards, MultiCard or as cards with standard printing

General ordering data

| Type | Order No. | Version | GTIN (EAN) | Qty. |
|-------------------|----------------------------|---|---------------|------------|
| DEK 5/6 MC SDR | 1609830000 | Terminal markers, MultiCard, 5 x 6 mm, Polyamide 66, Colour: To customer specification | 4008190456603 | 200 pc(s). |

Slotted screwdriver

Slotted screwdriver with rounded blade SD DIN 5265,
ISO 2380/2, output to DIN 5264, ISO 2380/1.
ChromTop tip, SoftFinish grip


General ordering data

| Type | Order No. | Version | GTIN (EAN) | Qty. |
|--------------------|----------------------------|--|---------------|----------|
| SDS 0.6X3.5X100 | 9008330000 | Screwdriver, Blade width (B): 3.5 mm, Blade length: 100 mm, Blade thickness (A): 0.6 mm | 4032248056286 | 1 pc(s). |

Z terminal with tension spring connection ZDU 4-2/2AN

Weidmüller Interface GmbH & Co. KG
Klingenbergstraße 16
D-32758 Detmold
Germany
Fon: +49 5231 14-0
Fax: +49 5231 14-292083
www.weidmuller.com

Accessories

STR transparent strips



The various connector markers from Weidmüller enable users to solve virtually every labelling task on all types of lines. Whether several lines of labelling, ready-to-use markers with standard printing, or individual labelling, whether white or coloured markers or common designations at the clamping points, the comprehensive range of products represent the easy, quick and clear answer to every marking task.

General ordering data

| Type | Order No. | Version | GTIN (EAN) | Qty. |
|-------------------|----------------------------|---|---------------|-----------|
| STR 7 F.SCHT 7 | 0515300000 | Terminal markers, 27 x 6.3 mm, Polyester, PVC-free, Colour: Transparent | 4008190182175 | 20 pc(s). |

ZQV 4



Weidmüller offers users of modular terminals of the Z-Series a comprehensive range of accessories that render possible appropriate solutions for all - even non-standard - tasks.

The accessories must comply with the same quality standards as the modular terminals themselves.

General ordering data

| Type | Order No. | Version | GTIN (EAN) | Qty. |
|-------------|----------------------------|---|---------------|-----------|
| ZQV 4/4 GE | 1608970000 | Z-series, Accessories, Cross-connector, For the terminals, No. of poles: 4 | 4008190263249 | 60 pc(s). |
| ZQV 4/10 GE | 1609030000 | Z-series, Accessories, Cross-connector, For the terminals, No. of poles: 10 | 4008190263300 | 20 pc(s). |
| ZQV 4/9 GE | 1609020000 | Z-series, Accessories, Cross-connector, For the terminals, No. of poles: 9 | 4008190263294 | 20 pc(s). |
| ZQV 4/7 GE | 1609000000 | Z-series, Accessories, Cross-connector, For the terminals, No. of poles: 7 | 4008190263270 | 20 pc(s). |
| ZQV 4/6 GE | 1608990000 | Z-series, Accessories, Cross-connector, For the terminals, No. of poles: 6 | 4008190263263 | 20 pc(s). |
| ZQV 4/5 GE | 1608980000 | Z-series, Accessories, Cross-connector, For the terminals, No. of poles: 5 | 4008190263256 | 20 pc(s). |
| ZQV 4/8 GE | 1609010000 | Z-series, Accessories, Cross-connector, For the terminals, No. of poles: 8 | 4008190263287 | 20 pc(s). |

**Z terminal with tension spring connection
ZDU 4-2/2AN**

Weidmüller Interface GmbH & Co. KG
 Klingenbergstraße 16
 D-32758 Detmold
 Germany
 Fon: +49 5231 14-0
 Fax: +49 5231 14-292083
 www.weidmueller.com

Accessories

| | | | |
|------------|----------------------------|--|-------------------------|
| ZQV 4/2 GE | 1608950000 | Z-series, Accessories, Cross-connector, For the terminals, No. of poles: 2 | 4008190263225 60 pc(s). |
| ZQV 4/3 GE | 1608960000 | Z-series, Accessories, Cross-connector, For the terminals, No. of poles: 3 | 4008190263232 60 pc(s). |

ZAP ZDU 4-2


Weidmüller offers users of modular terminals of the Z-Series a comprehensive range of accessories that render possible appropriate solutions for all - even non-standard - tasks.

The accessories must comply with the same quality standards as the modular terminals themselves.

General ordering data

| Type | Order No. | Version | GTIN (EAN) | Qty. |
|------------|----------------------------|---------------------|-------------------------|------|
| ZAP ZDU4-2 | 1770890000 | Z-series, End plate | 4032248135226 50 pc(s). | |
| OR | | | | |
| ZAP ZDU4-2 | 1770880000 | Z-series, End plate | 4032248121328 50 pc(s). | |
| BL | | | | |
| ZAP ZDU4-2 | 1770400000 | Z-series, End plate | 4032248135233 50 pc(s). | |

ZGB pivotable group tag holder


The ZGB 15 is a hinged group tag carrier. The tag carrier can hold the dekafix 5, WS 12/5 connector markers or the inlay tag ESO 15.

The ZGB 30 is a hinged group tag carrier. The tag carrier can hold the dekafix 5, WS 12/5 connector markers or the inlay tag ESO 7.

Inlay tags and protective strips can be found under "Accessories".

General ordering data

| Type | Order No. | Version | GTIN (EAN) | Qty. |
|--------|----------------------------|---|-------------------------|------|
| ZGB 30 | 1611930000 | Group marker, Terminal markers, 32 x 7 mm, Polyamide 66, Colour: White | 4008190002251 20 pc(s). | |

**Z terminal with tension spring connection
ZDU 4-2/2AN**

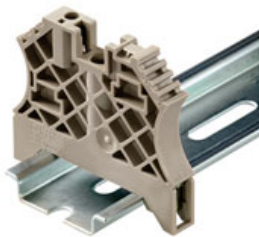
Weidmüller Interface GmbH & Co. KG
Klingenbergstraße 16
D-32758 Detmold
Germany
Fon: +49 5231 14-0
Fax: +49 5231 14-292083
www.weidmueller.com

Accessories
Markers


Extensive range of accessories for the FieldPower® boxes.
Cable seals, plug-in connectors, locking elements and much more.

General ordering data

| Type | Order No. | Version | GTIN (EAN) | Qty. |
|------------|----------------------------|--|---------------|------------|
| WS 12/6 MC | 1609900000 | Terminal markers, MultiCard, 12 x 6 mm, Polyamide 66, Colour: White | 4008190203467 | 600 pc(s). |
| NE WS | | | | |

for TS 35 terminal rail


Weidmüller's range of products includes end brackets that guarantee a permanent, reliable mounting on the terminal rail and prevent sliding. Versions with and without screws are available. The end brackets include marking options, also for group markers, and also a test plug holder.

General ordering data

| Type | Order No. | Version | GTIN (EAN) | Qty. |
|-------------------|----------------------------|--------------------------|---------------|------------|
| ZEW 35/2 | 8630740000 | Accessories, End bracket | 4032248348916 | 20 pc(s). |
| EW 35 GR | 0383530000 | Accessories, End bracket | 4008190027322 | 50 pc(s). |
| 7032 | | | | |
| EW 35 | 0383560000 | Accessories, End bracket | 4008190181314 | 50 pc(s). |
| EW 35/ SCHA/M3 | 0258660000 | Accessories, End bracket | 4008190033477 | 20 pc(s). |
| ZEW 35 | 9540000000 | Accessories, End bracket | 4008190956264 | 20 pc(s). |
| WEW 35/2 | 1061200000 | Accessories, End bracket | 4008190030230 | 100 pc(s). |
| WEW 35/1 | 1059000000 | Accessories, End bracket | 4008190172282 | 50 pc(s). |

Data sheet

**Z terminal with tension spring connection
ZDU 4-2/2AN**

Weidmüller Interface GmbH & Co. KG
 Klingenbergstraße 16
 D-32758 Detmold
 Germany
 Fon: +49 5231 14-0
 Fax: +49 5231 14-292083
 www.weidmueller.com

Accessories

ZTA 6



Weidmüller offers users of modular terminals of the Z-Series a comprehensive range of accessories that render possible appropriate solutions for all - even non-standard - tasks.

The accessories must comply with the same quality standards as the modular terminals themselves.

General ordering data

| Type | Order No. | Version | GTIN (EAN) | Qty. |
|----------|----------------------------|--------------------------------------|---------------|-----------|
| ZTA 6/ZA | 1780660000 | Test adapter, Rated control voltage: | 4032248180189 | 25 pc(s). |