

Product Data Sheet

9594314204

VBS0133RUJCS

RER133-33/18/2TDMO

ebmpapst

The engineer's choice



RER133-33/18/2TDMO

INDEX

- 1 General 3**
- 2 Mechanics 3**
 - 2.1 General..... 3
 - 2.2 Connections..... 3
- 3 Operating Data 5**
 - 3.1 Electrical Interface - Input..... 5
 - 3.2 Electrical Operating Data 7
 - 3.3 Electrical Interface - Output..... 8
 - 3.4 Electrical Features 9
 - 3.5 Aerodynamics 10
 - 3.6 Sound Data..... 11
- 4 Environment..... 11**
 - 4.1 General..... 11
 - 4.2 Climatic Requirements 11
 - 4.3 EMC 11
- 5 Safety..... 13**
 - 5.1 Electrical Safety 13
 - 5.2 Approval Tests 13
- 6 Reliability..... 13**
 - 6.1 General..... 13

1 General

Fan type	Blower without chassis with intake nozzle	
Rotating direction looking at rotor	Clockwise	
Airflow direction	Air in axially, Air out radially	
Bearing system	Ball bearing	
Mounting position - shaft	Any	

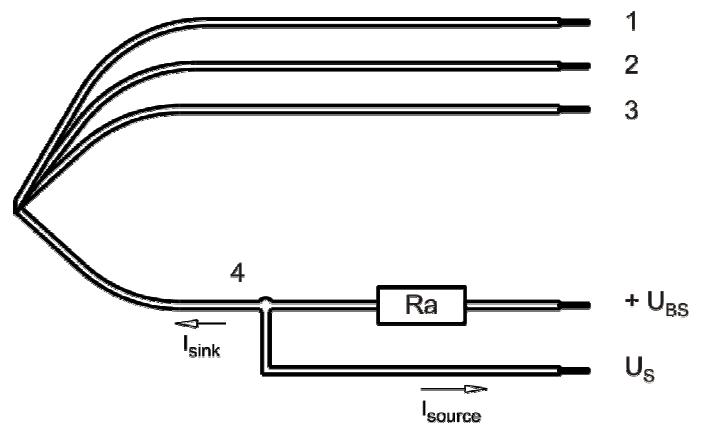
2 Mechanics

2.1 General

Depth	55,5 mm	
Diameter	133 mm	
Mass	0,46 kg	
Housing material		
Impeller material	Plastic	

2.2 Connections

Electrical connection	Wires	
Lead wire length	L = 310 mm	
Tolerance	+ - 10 mm	
Tube length	S = 65 mm	
Tolerance	+ - 5 mm	



Wire	Color	Operation	Wire size	Insulation diameter
1	red	+ UB	AWG 22	1,7 mm
2	blue	- GND	AWG 22	1,7 mm
3	violet	CONTR	AWG 22	1,7 mm
4	white	Tacho	AWG 22	1,7 mm

The auxiliaries shown on the schematic diagram (which are required for the intended use) are not part of our delivery.

Wire 1 - 4: AWG20 (Insulationdiameter 1,7mm)

3 Operating Data

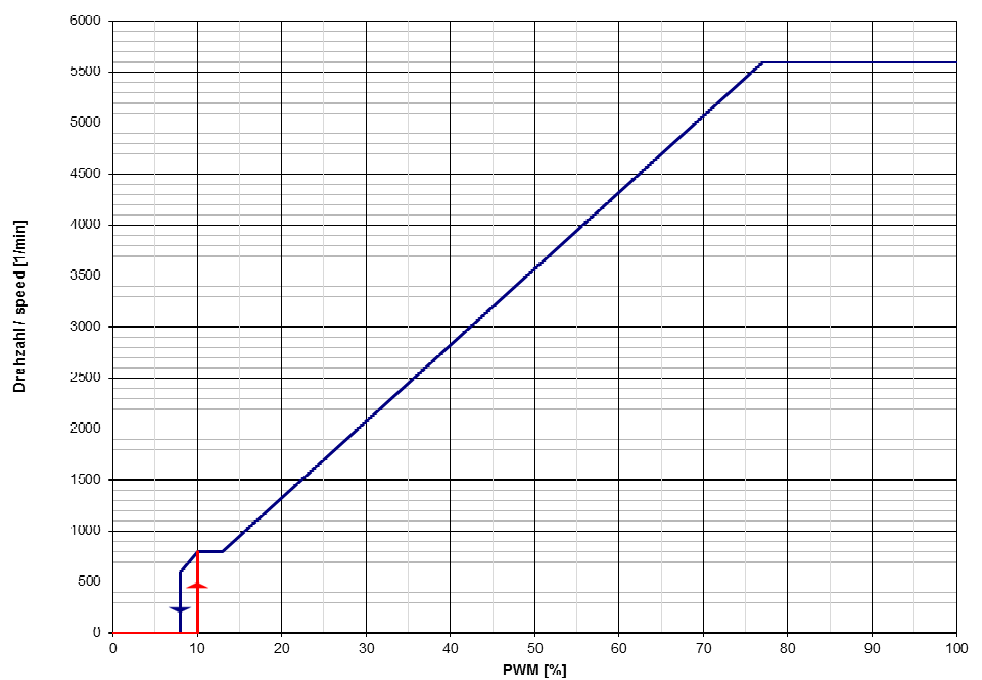
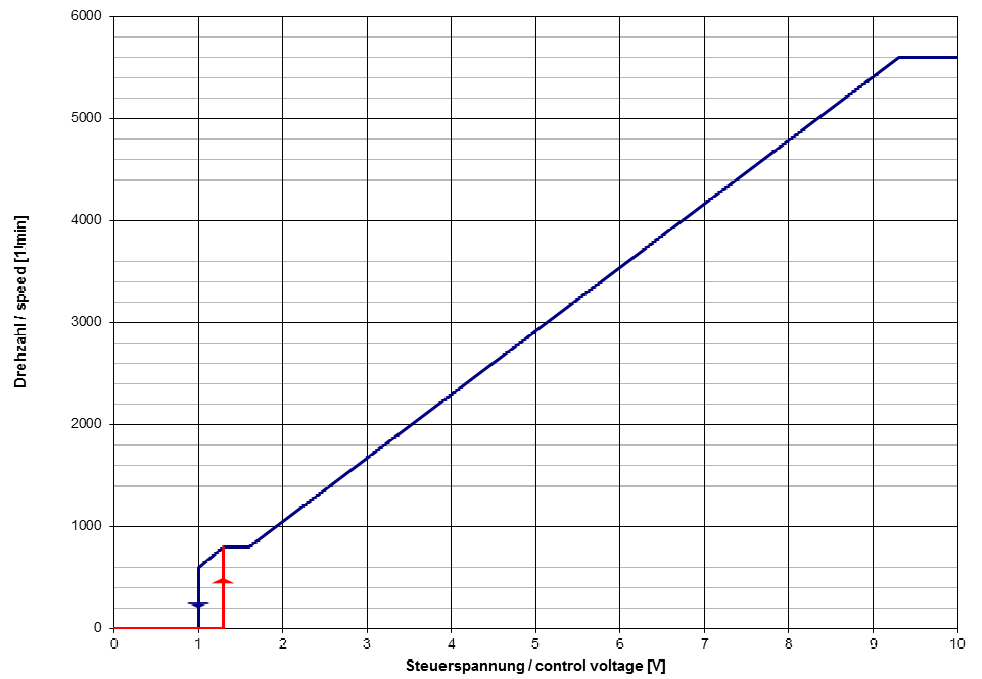
3.1 Electrical Interface - Input

Control input	Analog
---------------	--------

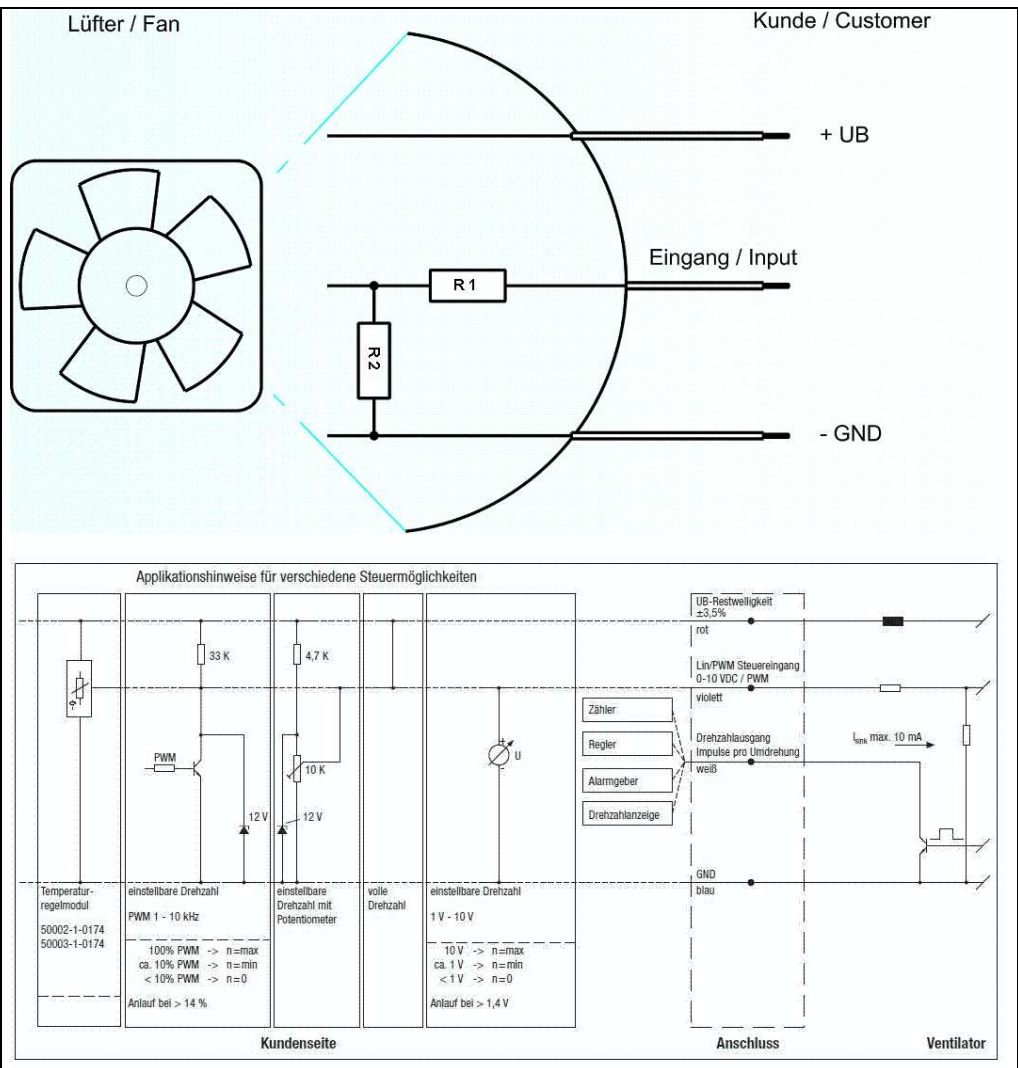
Features

PWM - Frequency	1 kHz - 10 kHz typical: 2 kHz
Input voltage range	0 V - 10 V

Characteristics



Schematics



Input voltage divider:

R1 = 47 kOhm

R2 = 36 kOhm

For protection: There is parallel to R2 a 5,1 V Z-Diode

Speed control:

By pulse-width modulation (PWM) 0 ... 100%
 with switching transistor in emitter circuit and collector resistance to 12 V
 Frequency = 2 kHz (1 - 10 kHz)

Information to the curve PWM:

- 0% - <10% PWM: 0 1/min
- 10% PWM: 800 1/min (Fan on, coming from 0% PWM)
- 10% - 13% PWM: 800 1/min (corresponding to min. speed)
- 13% - 78% PWM: linear increasing curve
- 78% - 100% PWM: 5.600 1/min (corresponding to max. speed)
- 10% - >8% PWM: linear decreasing curve (coming from 100% PWM)
- 8% PWM: 600 1/min or 0 1/min (Fan off, coming from 100% PWM)

or:

Speed control:

By analog voltage 0 - 10 V

Information to the curve analog:

0 V - < 1,3 V: 0 1/min
 1,3 V: 800 1/min (Fan on, coming from von 0 V)
 1,3 V - 1,6 V: 800 1/min (corresponding to min. speed)
 1,6 V - 9,4 V: linear increasing curve
 9,4 V - 10 V: 5.600 1/min (corresponding to max. speed)
 1,3 V - > 1,0 V: linear decreasing curve (coming from 10 V)
 1,0 V: 600 1/min or 0 1/min (Fan off, coming from 10 V)

The fan have no sensor break detection!

3.2 Electrical Operating Data

Measurement conditions: Normal air density = 1,2 kg/m³; Temperature 23°C +/- 3°C; Motor axis horizontal; warm-up time before measuring 5 minutes (unless otherwise specified).
 In the intake and outlet area should not be any solid obstruction within 0,5 m.

Measurement setup:	Measured between two steel plates
Steel plate:	140 mm x 140 mm
Intake nozzle:	D: 87 mm; R: 8 mm
Distance between bottom and top plate:	66,5 mm
Overlapping impeller / nozzle:	2 mm

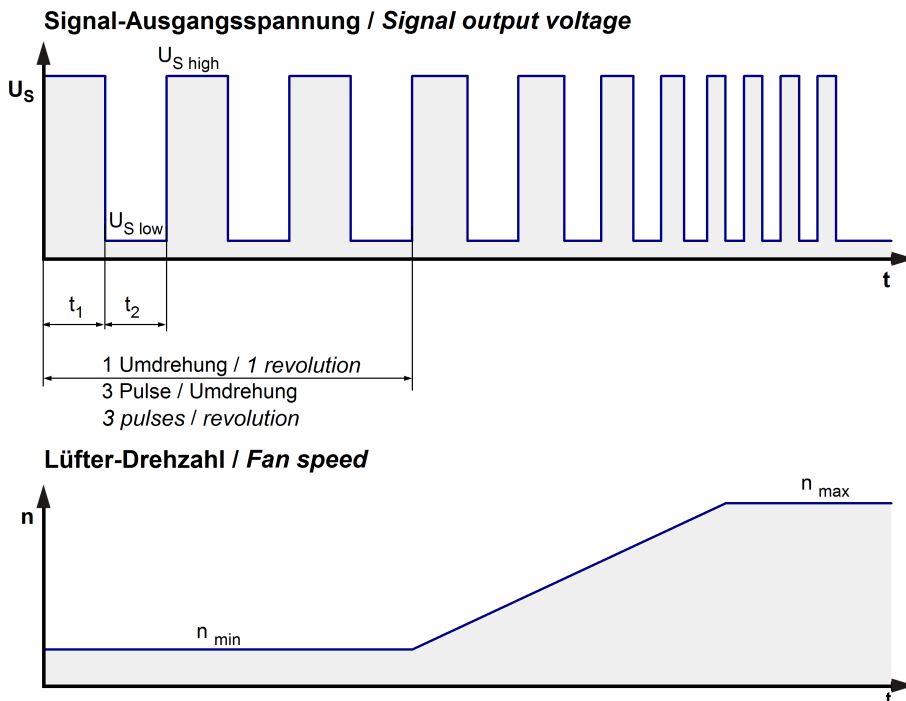
$\Delta p = 0$: corresp. to free air flow (see chapter aerodynamics)
 I: corresp. to arithm. mean current value

Name	Condition
U Contr. 0001	U Contr.: 10 V

Features	Condition	Symbol	Values		
Voltage range		U	36 V		60 V
Nominal voltage		U_N		48 V	
Power consumption	$\Delta p = 0$	P	50 W	62 W	66 W
Tolerance	U Contr. 0010		+/- 10,0 %	+/- 10,0 %	+/- 10,0 %
Current consumption	$\Delta p = 0$	I	1.400 mA	1.300 mA	1.100 mA
Tolerance	U Contr.0010		+/- 10,0 %	+/- 10,0 %	+/- 10,0 %
Speed	$\Delta p = 0$	n	5.100 1/min	5.600 1/min	5.600 1/min
Tolerance	U Contr. 0010		+/- 10,0 %	+/- 5 %	+/- 5 %

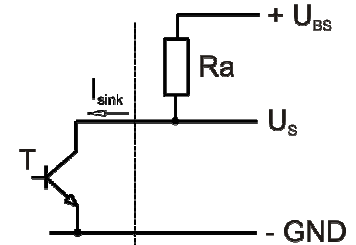
3.3 Electrical Interface - Output

Tacho type	/2 (open collector)
------------	---------------------



$$R_a = \frac{U_{BS} - U_{S\ low}}{I_{sink}}$$

Lüfter / Fan Kunde / Customer



Features	Note	Values
Tacho operating voltage	U_{BS}	$\leq 60,0\ V$
Tacho signal Low	$U_{S\ low}$	$\leq 0,4\ V$
Tacho signal High	$U_{S\ high}$	$\leq 60,0\ V$
Maximum sink current	I_{sink}	$\leq 20\ mA$
Maximum source current		$0\ mA$
External resistor	External resistor R_a from U_{BS} to U_S required. All voltages measured to GND.	
Tacho frequency	$(3 \times n) / 60$	$280\ Hz @ 5.600\ 1/min$
Tacho isolated from motor	No	
Slew rate		$\Rightarrow 0,5\ V/us$

n = revolutions per minute (1/min)

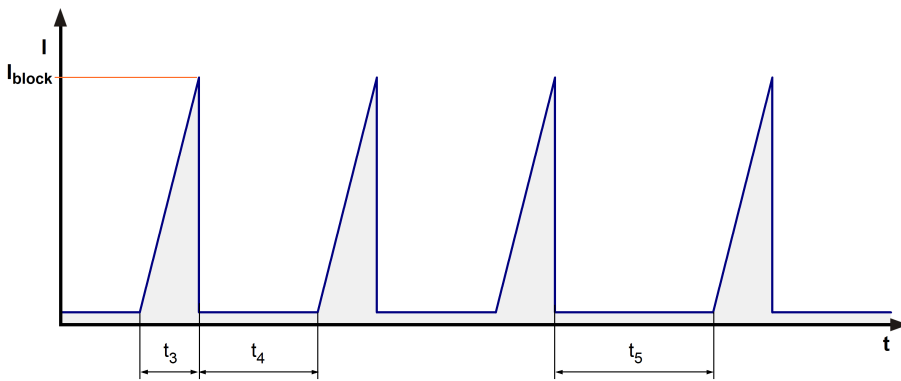
Please note:

At zero speed the tacho signal is at a static HIGH. It will be also HIGH when the fan is still spinning, but the speed control signal is set to zero speed already.

The tacho signal is only activated after the start-up is completed.

3.4 Electrical Features

Electronic function	Speed-Controlled	
Reversed polarity protection	N-CH FET	
Max. residual current at U_N	$I_F \leq 5 \text{ mA}$	
Locked rotor protection	Auto restart	
Locked rotor current at U_N	I_{block} approx. 2.700 mA	
Clock signal at locked rotor Extended Downtime	t_3 / t_4 typical: 6 s / 10,0 s t_5 : 40 s after 4 start-up tests	
Internal fuse	Littelfuse NANO2 > Very Fast-Acting > 451/453 Series 4A / 125V (Art.No.: 0451004.MRL)	



Locked rotor signal t_5 :

After 4 failed start-ups there is an extended timeout of 40 s.

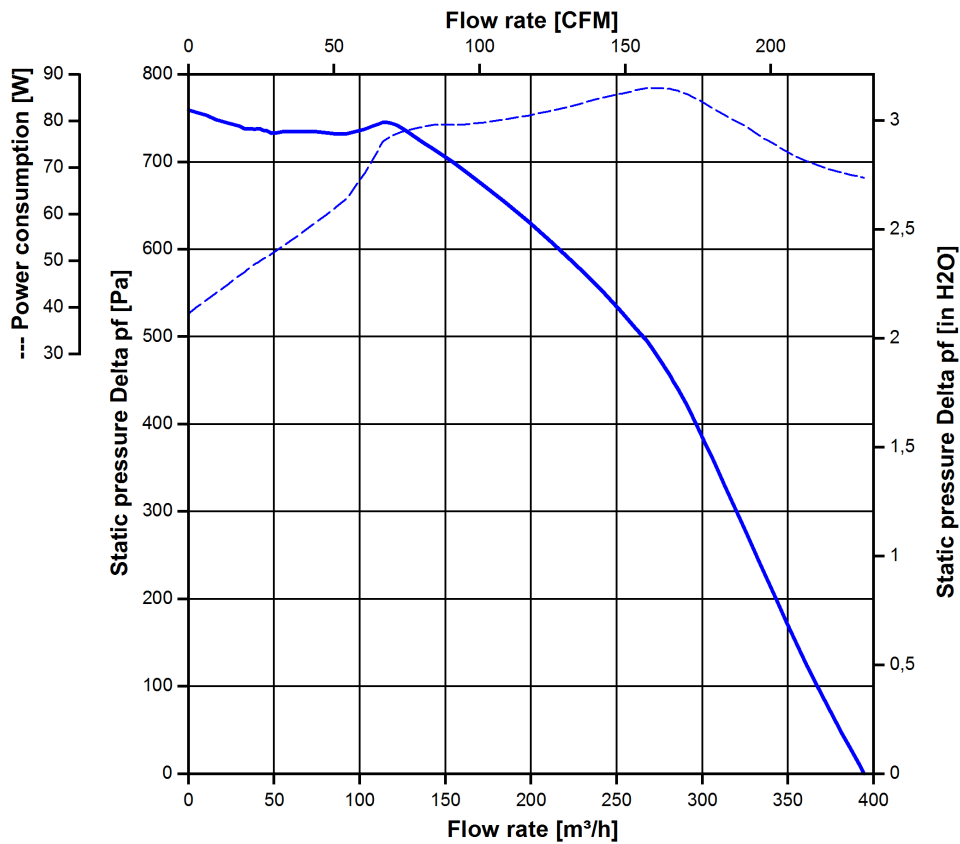
3.5 Aerodynamics

Measurement conditions: Measured with a double chamber intake rig acc. to DIN EN ISO 5801. Normal air density = 1,2 kg/m³; Temperature 23°C +/- 3°C; In the intake and outlet area should not be any solid obstruction within 0,5 m. Motor shaft horizontal. The information is only valid under the specified test conditions and may be changed by the installation conditions. If there are deviations from the standard test conditions, the characteristic values must be checked under the installed conditions. Power consumption of the fan motor when operating at normal voltage is shown. Depending on the operating conditions of the application, the power input may be higher.

Measurement setup:	Measured between two steel plates
Steel plate:	140 mm x 140 mm
Intake nozzle:	D: 87 mm; R: 8 mm
Distance between bottom and top plate:	66,5 mm
Overlapping impeller / nozzle:	2 mm

a.) Operation condition:

5.600 1/min at free air flow	U Contr. 10 V		
Max. free-air flow ($\Delta p = 0 / \dot{V} = \text{max.}$)		395 m ³ /h	
Max. static pressure ($\Delta p = \text{max.} / \dot{V} = 0$)		760 Pa	



3.6 Sound Data

Measurement conditions: Sound pressure level: 1 meter distance between microphone and the air intake.
Sound power level: According to DIN 45635 Part 38 (ISO 10302)
Measured in a semianchoic chamber with a background noise level of $L_p(A) < 5 \text{ dB(A)}$
For further measurement conditions see chapter aerodynamics.

a.) Operation condition:

5.600 1/min at free air flow	U Contr. 10 V		
------------------------------	---------------	--	--

Optimal operating point	260 m ³ /h @ 516 Pa	
Sound power level at the optimal operating point	7,7 bel(A)	
Sound pressure level at free air flow, measured in rubber bands		

4 Environment

4.1 General

Min. permitted ambient temperature TU min.	-20 °C	
Max. permitted ambient temperature TU max.	65 °C	
Min. permitted storage temperature TL min.	-40 °C	
Max. permitted storage temperature TL max.	80 °C	

4.2 Climatic Requirements

Humidity requirements	humid heat, constant; according to DIN EN 60068-2-78, 14 days	
Water exposure	None	
Dust requirements	None	
Salt fog requirements	None	

Permitted application area:

The product is intended for use in sheltered rooms with controlled temperature and controlled humidity. Directly exposure to water must be avoided.

Pollution degree 1 (according DIN EN 60664-1)

There is either no pollution or it occurs only dry, non-conductive pollution. The pollution has no negative impact.

Please require severity levels and specification parameters from the responsible development departments.

4.3 EMC

Kind	Radiated Emission; 30 MHz - 1000 MHz
According	DIN EN 55032:2016-02
Check accuracy / Limit	Class B
Result	Below limit Class B

Kind	Electromagnetic Field Immunity Test
According	DIN EN 61000-4-3:2006-12
Check accuracy / Limit	10 V/m; 80 - 1000 MHz; AM; m = 0,8; f = 1 kHz; 1%; t = 3 s
Result	A: The monitored function operates as designed during and after exposure to a disturbance.

Kind	Electrical Fast Transient / Burst Immunity Test
According	DIN EN 61000-4-4:2005-07
Check accuracy / Limit	+/- 2 kV on Power Lines; Coupling: POS, NEG, {PE}, ALL, 5 kHz and 100 kHz; 1 min
Result	A: The monitored function operates as designed during and after exposure to a disturbance.

Kind	Immunity to Conducted Disturbances, Induced by RF-Fields
According	DIN EN 61000-4-6:2001-12
Check accuracy / Limit	10 V _{rms} ; 150 kHz - 80 MHz; m = 0,8; f = 1 kHz; 1%; t = 3 s
Result	A: The monitored function operates as designed during and after exposure to a disturbance.

5 Safety

5.1 Electrical Safety

Dielectric strength DIN EN 62368 and DIN EN 60335 A.) Type test Measuring conditions: After 48h of storage at 95% R.H. and 25°C. No arcing or breakdown is allowed! All connections together to ground. B.) Routine test Measuring conditions: At indoor climate. No arcing or breakdown is allowed! All connections together to ground.	500 VAC / 1 Min. 850 VDC / 1 Sec.	
Isolation resistance Measuring conditions: After 48h of storage at 95% R.H. and 25°C measured with U=500 VDC for 1 min.	RI > 10 MOhm	
Clearance / creepage distance	1,0 mm / 1,5 mm	
Protection class	III	

5.2 Approval Tests

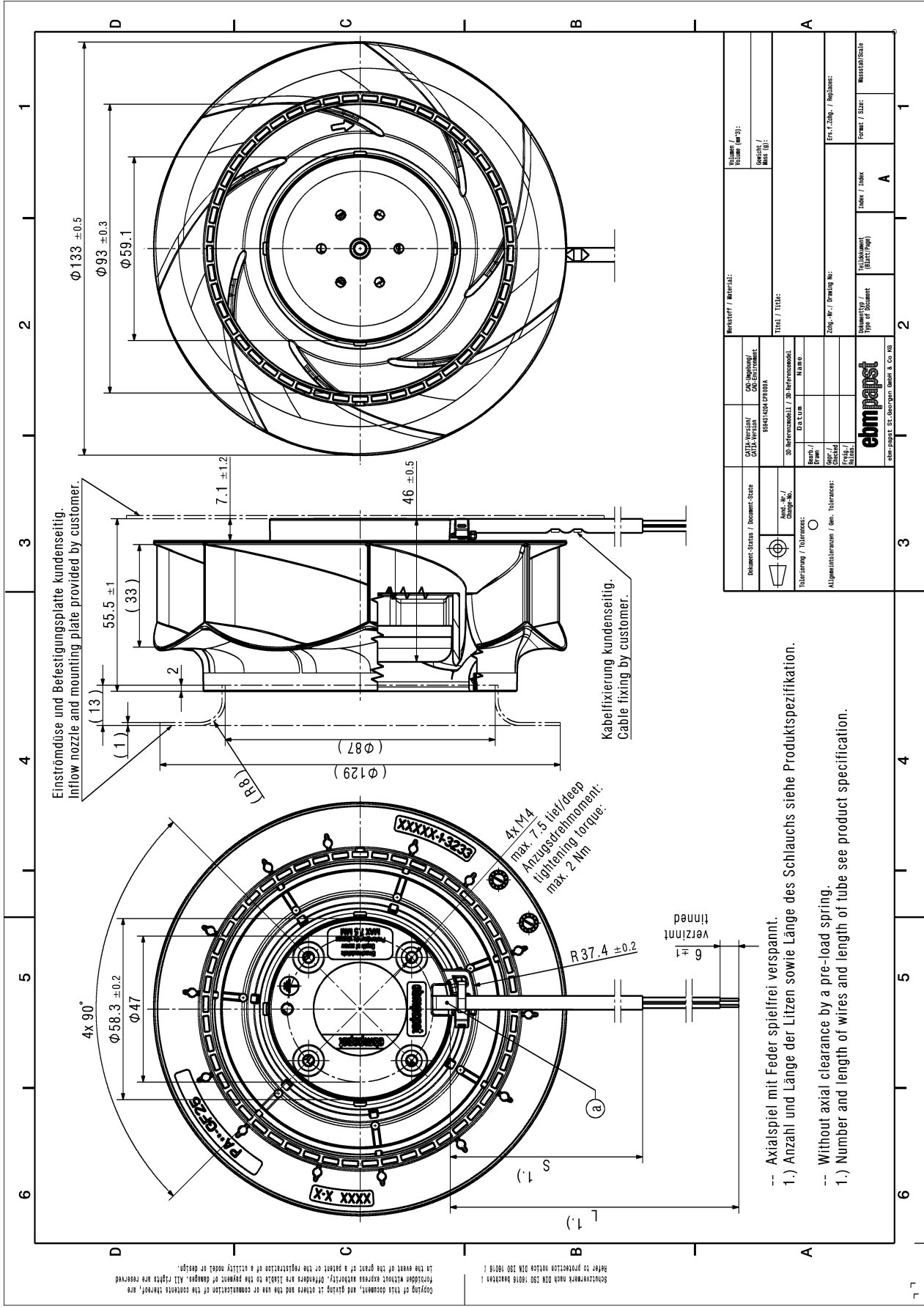
CE	EC Declaration of Conformity	Yes
EAC	Eurasian Conformity	Yes
UL	Underwriters Laboratories	Yes / UL507, Electric Fans E38324
VDE	Association for Electrical, Electronic and Information Technologies	No
CSA	Canadian Standards Association	Yes / CSA audited by UL according to C22.2 No. 113 Fans and Ventilators
CCC	China Compulsory Certification	Yes

UL Filenummer: E38324

6 Reliability

6.1 General

Life expectancy L10 at TU = 40 °C	55.000 h	
Life expectancy L10 at TU max.	30.000 h	
Life expectancy L10 acc. to IPC 9591 at TU = 40 °C	92.5 00 h	



Copying of this document, and giving it others and the use or communication of the contents thereof, are forbidden without express written consent. Reproduction and circulation are strictly prohibited. All rights are reserved in the event of the grant of a patent or the registration of a utility model or design.

Stichtag: 01.07.2018
 Refer to production order 01M 130 18018

Document Status / Document-Status	CDTA-Version / CDTA-Version	Material / Material	Volume / Menge (kg)
<input type="checkbox"/> Approved / genehmigt <input type="checkbox"/> In Production / in Produktion <input type="checkbox"/> Draft / Entwurf <input type="checkbox"/> Deleted / gelöscht <input type="checkbox"/> Invalid / ungültig <input type="checkbox"/> Other / andere	CDTA-Modell / CDTA-Modell Datum Name CD-Referenzmodell / CD-Referenzmodell Name	Hersteller / Material: TITEL / TITEL: Zeich.-Nr. / Drawing No.: Formkennzeichen / Formkennzeichen	Gewicht / Mass (g): Formkennzeichen / Formkennzeichen Zeich.-Nr. / Drawing No.: Formkennzeichen / Formkennzeichen
Allgemeine Anmerkungen / General Notes: Toleranzen / Tolerances:		Erläuterung / Explanation: Formkennzeichen / Formkennzeichen Zeich.-Nr. / Drawing No.: Formkennzeichen / Formkennzeichen	
ebmpapst ebmpapst GmbH & Co. KG		Formkennzeichen / Formkennzeichen Zeich.-Nr. / Drawing No.: Formkennzeichen / Formkennzeichen	