



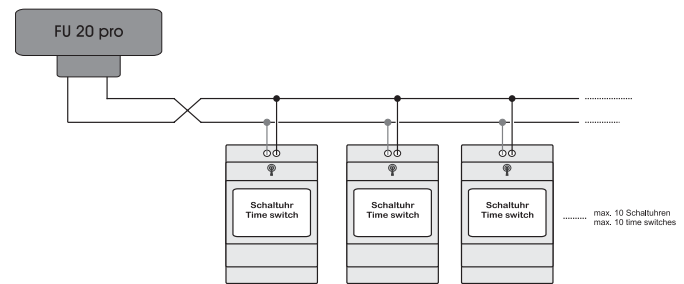
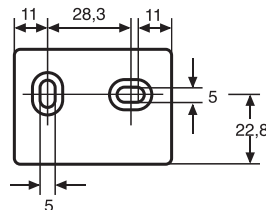
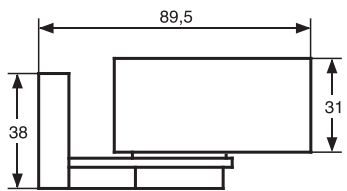
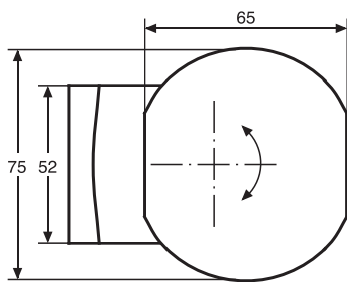
- One receiver can connect to 10 time switches
- DCF 77 radio link with FU 20.00 pro
- Time and date are automatically transferred to the clock
- Fully automatic summertime (European standard)
- Operation indicator: flashing LED on receiving
- Compact housing
- Simple mounting with fastening angle, receiver is rotatable
- Connection wire specifications: 2-wire, no shield, variable core cross-section
- Max. length of wire between receiver and time switch 200 m



Range of the signal approx. 1500 km

## Radio Receiver DCF-Time FU 20.00 pro for wall mounting

Technical data	
<b>Power Supply</b>	Via time switch or master clock (without battery)
<b>Output</b>	DCF-protocol
<b>Receiver</b>	narrowband-heterodyne receiver
<b>Operation indicator</b>	flashing LED on receiving
<b>Consequence of an interference with reception</b>	time switches use their quartz as time base
<b>Antenna</b>	built-in ferrite rod
<b>Permitted ambient temperature</b>	-20°...+50°C
<b>Housing</b>	self-extinguishing thermoplastic
<b>Mounting</b>	Fastening angle for wall mounting (receiver is rotatable)
<b>Type of protection</b>	IP 54 (DIN EN 60529)
<b>Recommended cable</b>	Shielded / Section 0.33 up to 2.5 m <sup>2</sup>
<b>Type of connection</b>	Power supply and DCF protocol via 2-wire-connection. Accessory for hugomüller time switches and master clocks. [Special model: <b>FU 21.00 pro</b> with 3-wire-connection for alternative applications / external power-supply required / technical details and further information on request]



Order number	Version
<b>FU 20.00 pro</b>	for wall mounting (receiver is rotatable)
▼ Housing colour	