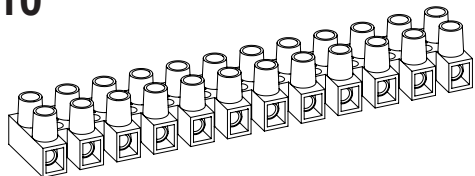


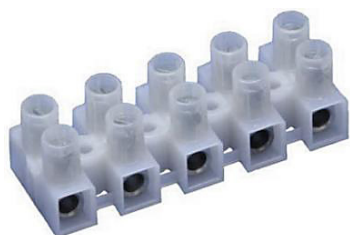
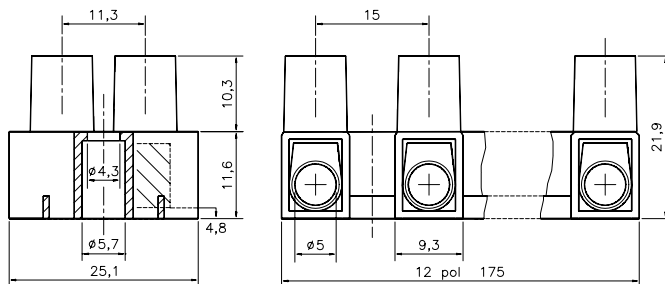
Terminal Blocks  
KlemrækkerKopplingsplint  
StandardAnslutningsklemmen  
Morsettiere a vite

## EN 60998-2-1 CE

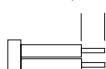
## HE10



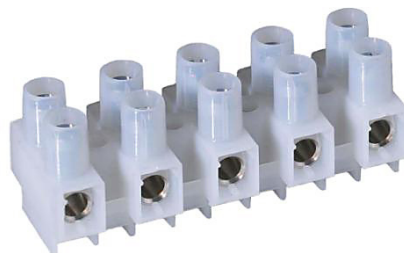
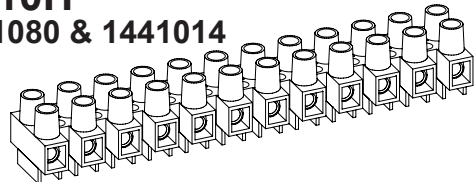
Description	Poles	Insert	Article No.
HE10 12-poles	12	Std.	0101N1210
HE10 WPR 12-poles	12	WPR	0101W1210
HE10 BA 12-poles	12	BA	0101B1210
HE10 2-poles	2	Std.	0101N0210



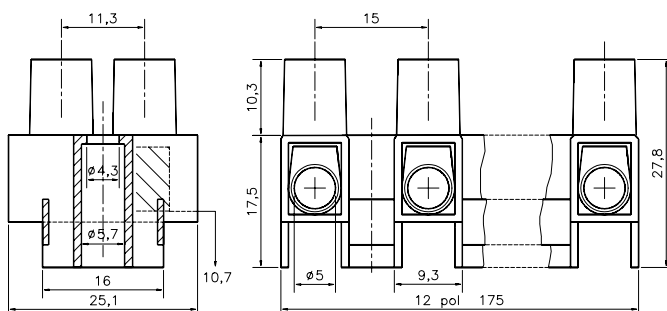
Stripping Length  
Skalning  
Abisolierlänge  
7,6 - 9 mm



Torque:  
Recommended 0,84 Nm  
Max. 1,2 Nm

HE10H  
1441080 & 1441014

Description	Poles	Insert	Article No.
HE10H 12-poles	12	Std.	0103N1210
HE10H WPR 12-poles	12	WPR	0103W1210
HE10H BA 12-poles	12	BA	0103B1210
HE10H WPR 4-poles	4	WPR	0103W0410
HE10H MS 12-poles	12	Std.	0103N1210MS



## TECHNICAL DATA

## TEKNISKA DATA

## TECHNISCHE ANGABEN

Voltage	Fixing centres	Cable size
Märkspänning	Delningsmått	Area
Nennspannung	Rastermass	Nennquerschnitt

400 - 500 V	15 mm	6 - 10 mm <sup>2</sup>
-------------	-------	------------------------

## UL HE10 300V / HE10H 600V

Current	Working temperature	Insulation material
Märkström	Arbetstemperatur	Isolationsmaterial
Nennstrom	Dauertemperatur	Isoliermaterial

25 A / UL 50 A	85°C UL 120/125°C	PA 66/6 PA66 V0
----------------	-------------------	-----------------

Insert	Screw M4
Tinned Brass	Steel bluechromated
Hylsa	Skruv M4

Mässing förtent	Stål blåkromatiserad
Klemmkörper	Schraube M4
Messing verzinkt	Stahl blauchromatiert
AWG	

18-6/18-8

## Approvals Godkännanden Genehmigungen

HE10	HE10H
NEMKO	NEMKO
FI	FI
CE	CE
SEMKO	SEMKO
DEMKO	DEMKO
UL	UL
Canada	Canada

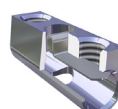
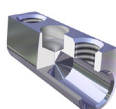
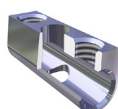


Standard  
Insert  
Inlägg  
Klemmkörper

Type BA  
Insert Barrier  
Inlägg Barriär  
Klemmkörper Barriere

Type WPR  
Insert Wire protector  
Inlägg Trådskydd  
Klemmkörper Drahtschutz

HFM  
Hot Foil Marking  
Märkning  
Bezeichnung



The terminal block can be supplied with wire protector **WPR** or with barrier inserts **BA**, hot foil marking **HFM** or Brass Screws **MS**.  
Dessa plintar kan levereras med trådskydd **WPR** eller med barriär inlägg **BA**, samt Mässingskrav **MS** och märkning **HFM** direkt på plinten.  
Die Klemmen können auf Wunsch mit Drahtschutz **WPR**, Klemmkörper mit Barriere **BA**, oder mit Messingschrauben **MS** und Bezeichnung **HFM** geliefert werden.