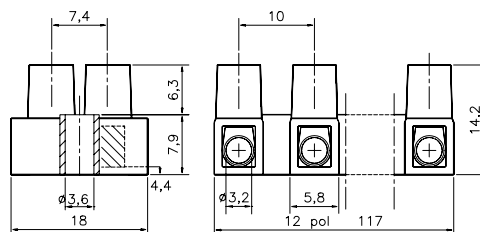
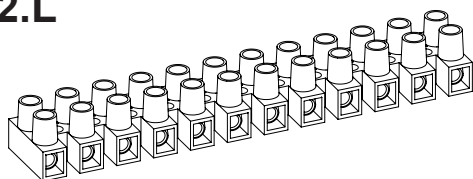


Terminal Blocks  
KlemrækkerKopplingsplint  
StandardAnschlußklemmen  
Morsettiere a Vite

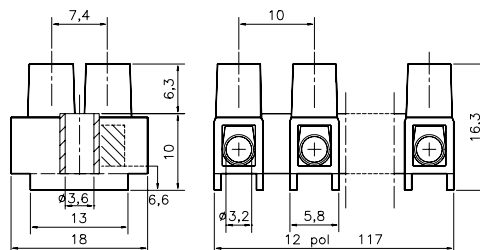
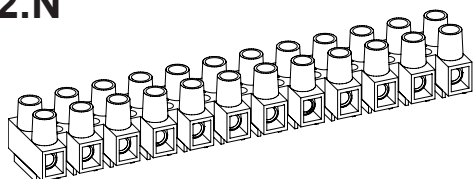
## EN 60998-2-1 CE

## HE2.L



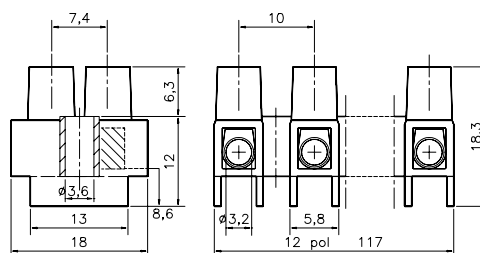
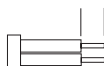
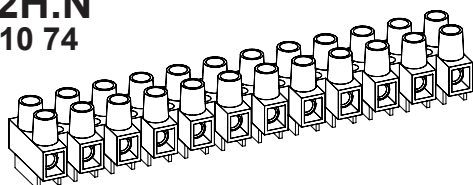
Description	Poles	Insert	Article No.
HE2.L 12-poles	12	Std.	0021N1210
HE2.L WPR 12-poles	12	WPR	0021W1210
HE2.L BA 12-poles	12	BA	0021B1210
HE2.L 2-poles	2	Std.	0021N0210
HE2.L WPR MS 12-pol	12	WPR	0021W1210MS

## HE2.N



Description	Poles	Insert	Article No.
HE2.N 12-poles	12	Std.	0022N1210
HE2.N WPR 12-poles	12	WPR	0022W1210
HE2.N BA 12-poles	12	BA	0022B1210
HE2.N 3-poles	3	Std.	0022N0310

Stripping Length  
Skalning  
Abisolierlänge  
5 - 6 mm

HE2.H.N  
14 410 74

Description	Poles	Insert	Article No.
HE2.H.N 12-poles	12	Std.	0023N1210
HE2.H.N WPR 12-poles	12	WPR	0023W1210
HE2.H.N BA 12-poles	12	BA	0023B1210
HE2.H.N WPR 4-poles	4	WPR	0023W0410

Torque:  
Recommended 0,4 Nm  
Max. 0,5 Nm

## TECHNICAL DATA

## TEKNISKA DATA

## TECHNISCHE ANGABEN

## Approvals

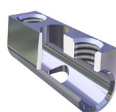
## Godkännanden Genehmigungen

Voltage	Fixing centres	Cable size
Märkspänning	Delningsmått	Area
Nennspannung	Rastermass	Nennquerschnitt
<b>400 V</b>	<b>10 mm</b>	<b>1,5 - 4 mm<sup>2</sup></b>
Current	Working temperature	Insulation material
Märkström	Arbetstemperatur	Isolationsmaterial
Nennstrom	Dauertemperatur	Isoliermaterial
<b>10A</b>	<b>85°C UL 120/125°C</b>	<b>PA 66/6 PA66 V0</b>

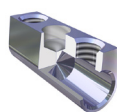
Insert	Screw M3
<b>Tinned Brass</b>	<b>Steel bluechromated</b>
Hylsa	Skruv M3
<b>Mässing förtent</b>	<b>Stål blåkromatiserad</b>
Klemmkörper	Schraube M3
<b>Messing verzinkt</b>	<b>Stahl blauchromatier</b>

HE2.L	HE2.N	HE2.H.N
FI	FI	FI
DEMKO	DEMKO	DEMKO
SEMKO	SEMKO	SEMKO
NEMKO	NEMKO	NEMKO

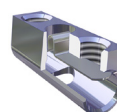
Standard  
Insert  
Inlägg  
Klemmkörper



Type BA  
Insert Barrier  
Inlägg Barriär  
Klemmkörper Barriere



Type WPR  
Insert Wire protector  
Inlägg Trådskydd  
Klemmkörper Drahtschutz



HFM  
Hot Foil Marking  
Märkning  
Bezeichnung



The terminal block can be supplied with wire protector **WPR** or with barrier inserts **BA**, hot foil marking **HFM** or Brass Screws **MS**.  
Dessa plintar kan levereras med trådskydd **WPR** eller med barriär inlägg **BA**, samt Mässingskrav **MS** och märkning **HFM** direkt på plinten.  
Die Klemmen können auf Wunsch mit Drahtschutz **WPR**, Klemmkörper mit Barriere **BA**, oder mit Messingschrauben **MS** und Bezeichnung **HFM** geliefert werden.