

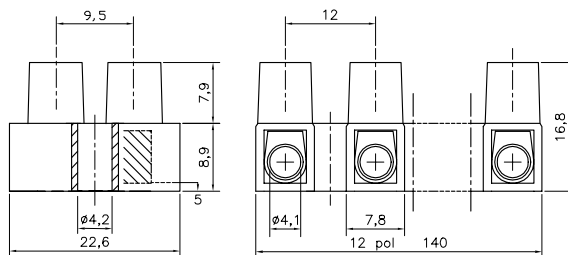
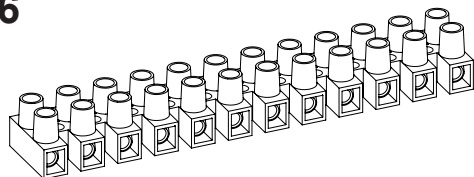
Terminal Blocks  
Klemrækker

Kopplingsplint  
Standard

Anschlußklemmen  
Morsettiere a Vite

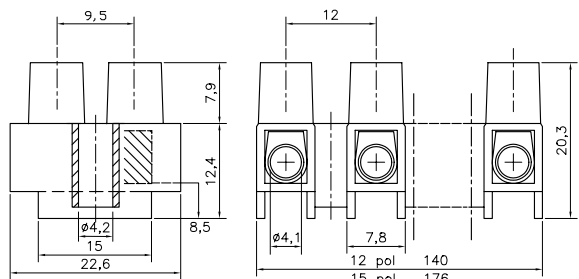
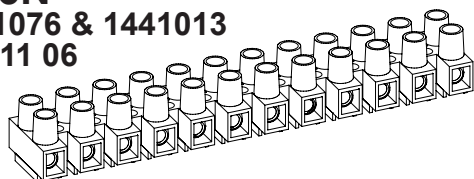
EN 60998-2-1 CE

HE6



Description	Poles	Insert	Article No.
HE6 12-poles	12	Std.	0061N1210
HE6 WPR 12-poles	12	WPR	0061W1210
HE6 WPB 12-poles	12	WPB	0061R1210
HE6 2-poles	2	Std.	0061N0210

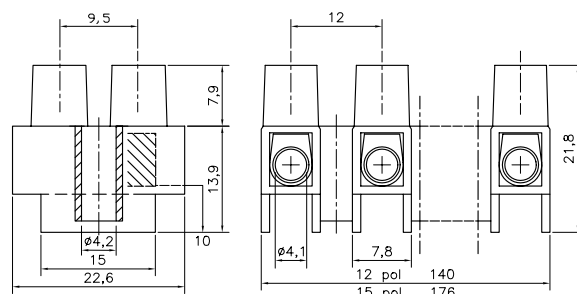
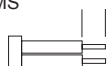
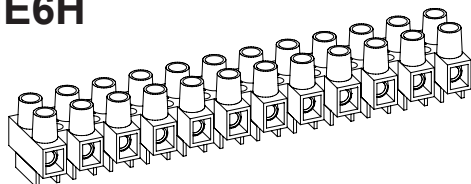
HE6N  
1441076 & 1441013  
14 411 06



Description	Poles	Insert	Article No.
HE6N 12-poles	12	Std.	0063N1210
HE6N WPR 12-poles	12	WPR	0063W1210
HE6N BA 12-poles	12	BA	0063B1210
HE6N 3-poles	3	Std.	0063N0310
HE6N MS 12-poles	12	Std.	0063N1210MS

Stripping Length  
Skalning  
Abisolierlänge  
7 - 7,5 mm

HE6H



Description	Poles	Insert	Article No.
HE6H 12-poles	12	Std.	0064N1210
HE6H WPR 12-poles	12	WPR	0064W1210
HE6H BA 12-poles	12	BA	0064B1210
HE6H WPB 4-poles	4	WPB	0064R0410

Torque:  
Recommended 0,55 Nm  
Max. 0,8 Nm

TECHNICAL DATA    TEKNISKA DATA    TECHNISCHE ANGABEN

Voltage	Fixing centres	Cable size
Märkspänning	Delningsmått	Area
Nennspannung	Rastermass	Nennquerschnitt

400 - 500 V	12 mm	4 - 6 mm <sup>2</sup>
-------------	-------	-----------------------

UL HE6 300V / HE6H 600V	Current	Working temperature	Insulation material
Märkström	Arbetstemperatur	Isolationsmaterial	
Nennstrom	Dauertemperatur	Isoliermaterial	

16 A/UL 30/40A 85°C UL 120/125°C PA 66/6 PA66 VO
--

Insert	Screw M3,5
Tinned Brass	Steel bluechromated
Hylsa	Skruv M3,5
Mässing förtent	Stål blåkromatiserad
Klemmkörper	Schraube M3,5
Messing verzinkt	Stahl blauchromatiert
AWG	
20-8/20-10	

Approvals	Godkännanden	Genehmigungen
HE6	HE6N	HE6H
SEMKO	SEMKO	SEMKO
FI	FI	FI
CE	CE	CE
NEMKO	NEMKO	NEMKO
DEMKO	DEMKO	DEMKO
UL Canada	UL Canada	UL Canada

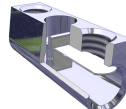
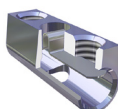
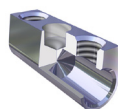
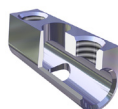
Standard  
Insert  
Inlägg  
Klemmkörper

Type BA  
Insert Barrier  
Inlägg Barriär  
Klemmkörper Barriere

Type WPR  
Insert Wire protector  
Inlägg Trädsydd  
Klemmkörper Drahtschutz

Type WPB  
Insert Barrier Wire Protector  
Inlägg Trädsydd Barriär  
Klemmkörper Drahtschutz Barriere

HFM  
Hot Foil Marking  
Märkning  
Bezeichnung



The terminal block can be supplied with wire protector **WPR**, barrier inserts **BA** or with Barrier Wire Protector **WPB**, hot foil marking **HFM** or Brass Screws **MS**. Dessa plintar kan levereras med trädsydd **WPR**, barriär inlägg **BA** eller med Barriär Trädsydd **WPB**, samt Mässingskrav **MS** och märkning **HFM** direkt på plinten. Die Klemmen können auf Wunsch mit Drahtschutz **WPR**, Barriere **BA** oder Klemmkörper mit Barriere Drahtschutz **WPB** mit Messingschrauben **MS** und Bezeichnung **HFM** geliefert werden.