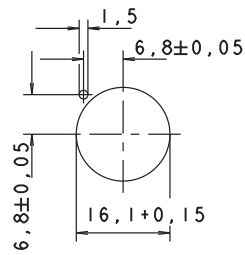


# LUMOTAST FK Illuminated pushbuttons



Panel cut-out



1

LUMO  
FK

## Technical Data

### → General information

Actuator	flat lens
Color of lens	see order block
Form of collar	see order block

### → Dimensions

Length of collar	see order block
Width of collar	see order block
Diameter of collar	see order block
Overall height	6.6 mm
Mounting depth with connector	30.7 mm
Mounting depth with plug-in socket	33.4 mm
Mounting hole	16.2 mm

### → Mechanical design

Mounting	click quick connection
Terminals	pin connector 4-pole / plug-in socket
Contact system	snap-action contact
Contact function	momentary
Contact arrangement	1 NO
Contact materials	Au
Illumination	yes
Lamp socket	Bi-Pin T1 / T1¼

### → Mechanical characteristics

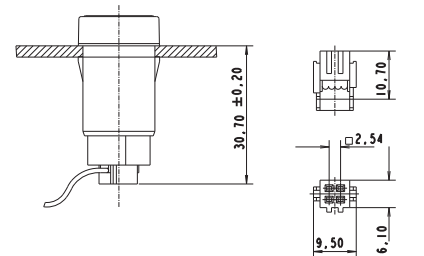
Operating force max.	6 N
Operating travel	3 mm
Switching travel	1.9 mm
Robustness max.	100 N

### → Electrical characteristics

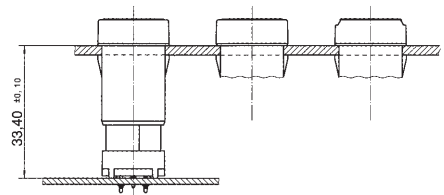
Rated voltage AC/DC max.	35 V
Rated voltage AC/DC min.	0.02 V
Rated current AC/DC max.	100 mA
Rated current AC/DC min.	0.01 mA
Contact resistance acc. to life max.	300 mΩ
Contact resistance when new max.	100 mΩ
Bouncing time max.	5 ms

### → Other specifications

Operating life (operations)	1,000,000
Degree of protection from front side	IP65 (DIN EN 60529)
Operation temperature min.	-25 °C
Ambient temp. operating max. without lamp /LED	+70 °C
Ambient temp. operating max. with lamp /LED	+55 °C
Storage temperature min.	-40 °C



with socket connector



with plug-in socket for PCB

# PUSHBUTTONS

LUMOTAST FK - ILLUMINATED PUSHBUTTONS








1

LUMO  
FK

## - Technical data (continued) – LUMOTAST FK - Illuminated pushbutton

Storage temperature max.	+80 °C
Environmental resistance	acc. to IEC 60068-2-14, -30, -33 and -78
Weight	6 g
ROHS compliant	yes
REACH compliant	yes

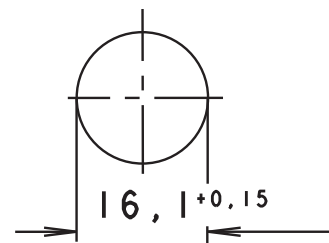
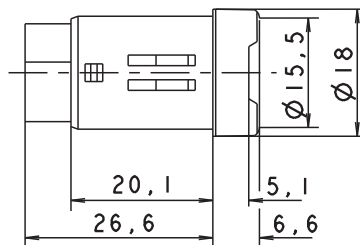
## Accessories LUMOTAST FK - Illuminated pushbutton

→ Description	Photo	Order no.	Additional accessories see page
Socket Bi-Pin T 1, LED		-	5 - 6
Socket Bi-Pin T 1, LED superbright		-	5 - 6
Plug-in socket for PCB		5.00.645.036/0000	5 - 28
Cable (flat ribbon cable 10 cm with socket connector and male quick connector, AMP 4-pin)		5.03.771.306/0000	5 - 29
Disassembly tool for LUMOTAST FK		5.05.800.041/0000	5 - 27
Flat ribbon cable, 4-wire, 1 m long		5.37.700.124/0000	5 - 28
Socket connector, 4-pin		5.92.025.368/0000	5 - 28



## LUMOTAST FK Illuminated pushbutton, round collar

Technical data see page 1 - 7



Panel cut-out

→ Contact function	Contact arrangement	Order no.	Note
momentary	1 NO	1.15.114.936/0000	Please include the desired lens in your order.

Note when using LEDs: A notch on the lamp socket identifies the cathode side (-).