



## Surface mounting enclosure



Powering Business Worldwide™

**Part no.** M22-16  
**Article no.** 216540

With high-grade steel screws, Enclosure base: anthracite (RAL 9005)

With high-grade steel screws

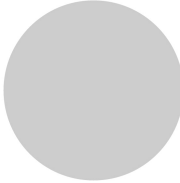
Enclosure base: anthracite (RAL 9005)



ATEX part numbers for use in dust-laden areas, Zone 22, Category 3 (→ Engineering)

**M22-16** with degree of protection IP66

### Program

Range			RMQ-Titan (drilling dimensions 22.5 mm)
Basic function			Accessories
Accessories			Surface mounting enclosure
Basic function accessories			Surface mounting enclosure
Single unit/Complete unit			Single unit
Material			Enclosure base anthracite
			With high-grade steel screws
Number of locations		Qty.	6
Cable entry knockouts			
Cable entry			at bottom: 2 x M20 at top: 2 x M20 lateral: 2 x M20/M25 (1 x each side)
Colour			
			
RAL Value			RAL 7035
Protection type			IP66
Connection to SmartWire-DT			no

### Approbationen

UL approval	Yes
CSA approval	Yes
Product Standards	IEC/EN 60947-5; UL 508; CSA-C22.2 No. 14-05; CSA-C22.2 No. 94-91; CE marking
UL File No.	E29184
UL CCN	NKCR
CSA File No.	012528
CSA Class No.	3211-03
NA Certification	UL listed, CSA certified
Degree of Protection	UL/CSA Type 3R, 4X, 12, 13

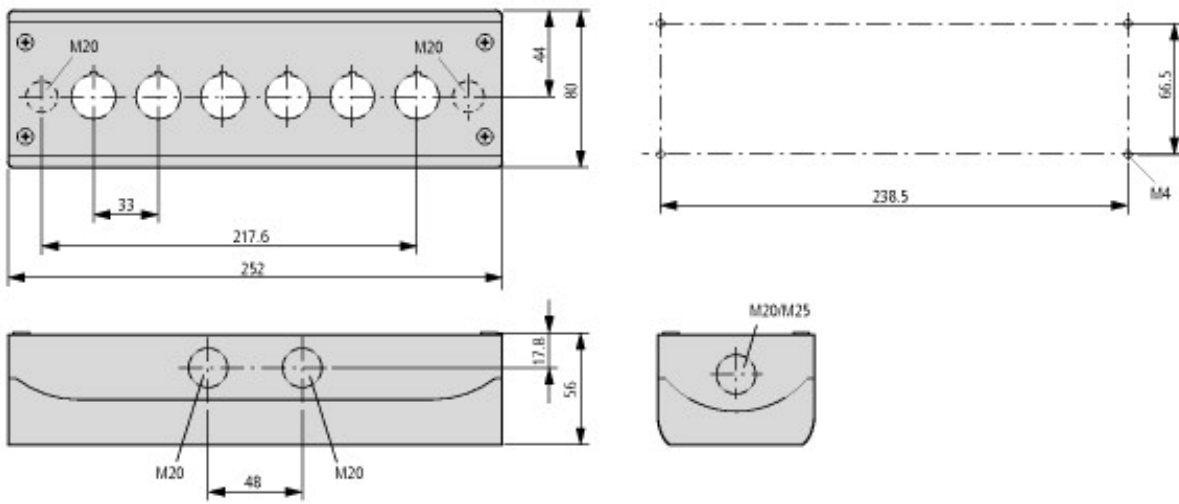
### Technical data according to ETIM 4.0

Protection type (IP)			IP67
Number of locations			6
Color housing cover			gray
Openings diameter		mm	22
Housing material			Insulated material
Construction type housing			surface mounting enclosure

### CAD-Data

Product standards CAD data: <http://eaton-moeller.partcommunity.com>

### Dimensions



Premoulded cable entry: bottom 2 x M20, top: 2 x M20, side: 2 x M20/M25 (per side 1 x)

### Additional product information (links)

AWA1160-1746 (IL04716003Z) RMQ-Titan System	<a href="ftp://ftp.moeller.net/DOCUMENTATION/AWA_INSTRUCTIONS/17460805.pdf">ftp://ftp.moeller.net/DOCUMENTATION/AWA_INSTRUCTIONS/17460805.pdf</a>
<b>Engineering</b>	
Key to part numbers	<a href="ftp://ftp.moeller.net/DOCUMENTATION/PDF/GB/TYPENSCHLUESSEL_RMQ-TITAN_de.pdf">ftp://ftp.moeller.net/DOCUMENTATION/PDF/GB/TYPENSCHLUESSEL_RMQ-TITAN_de.pdf</a>
Engineering	<a href="ftp://ftp.moeller.net/DOCUMENTATION/PDF/GB/PRO_RMQTitan_D_de.pdf">ftp://ftp.moeller.net/DOCUMENTATION/PDF/GB/PRO_RMQTitan_D_de.pdf</a>
Ordering example for custom complete units	<a href="ftp://ftp.moeller.net/DOCUMENTATION/PDF/GB/Bestellbeispiel_F0315_COMBINATION_de.pdf">ftp://ftp.moeller.net/DOCUMENTATION/PDF/GB/Bestellbeispiel_F0315_COMBINATION_de.pdf</a>
Order form for custom complete units	<a href="ftp://ftp.moeller.net/DOCUMENTATION/PDF/GB/FORM_F0315_Combination_de.pdf">ftp://ftp.moeller.net/DOCUMENTATION/PDF/GB/FORM_F0315_Combination_de.pdf</a>