

The following page(s) are extracted from multi-page Kuhnke product catalogs or CDROMs and any page number shown is relevant to the original document. The PDF sheets here may have been combined to provide technical information about the specific product(s) you have selected.

Hard copy product catalogs, and CDROMs have been published describing Kuhnke Pneumatics, Solenoids, Relays and Electronics; some divided into different books. A list of current publications is available on this web site or from our sales offices. Some may be available for download, but as substantially larger files.

Contact Details

Kuhnke sales and service in North America

Ellis/Kuhnke Controls
26 West Highland Avenue
Atlantic Highlands
New Jersey 07716
USA

T: 800-221-0714

T: 732-291-3334

F: 732-291-8154

Email: sales@kuhnkeusa.com

Important Note

The information shown in these documents is for guidance only. No liability is accepted for any errors or omissions. The designer or user is solely responsible for the safe and proper application of the parts, assemblies or equipment described.

Mikro-Magnetventile Typ 63
NW 0,5/0,7/0,9
2/2- und 3/2-Wege Sitzventile
Direktgesteuert



Micro-Solenoid Valves Type 63
0.5/0.7/0.9 mm Orifice
2/2 and 3/2 Poppet Valves
Directional Valves

Baubreite 10 mm, 3 verschiedene elektrische Anschlussmöglichkeiten.
Nothandbetätigung: nicht rastend.

Technische Daten:

Nennspannung: 24 V DC (12 V DC)
Druckbereich: 0 - 10 bar
Nennweite: 0,7 (0,5; 0,9)
Funktionen: 2/2-Wege NC
2/2-Wege NO
3/2-Wege NC
3/2-Wege NO

Umgebungstemperatur:* -10 °C bis + 50 °C
Leistungsaufnahme: 1,8 W
Einschaltdauer: ED = 100 %

Schutzart:

- Ventil mit Litze: IP 65 DIN 40050 am Übergang Magnetsystem, Litze und belegten pneumatischen Anschlüssen

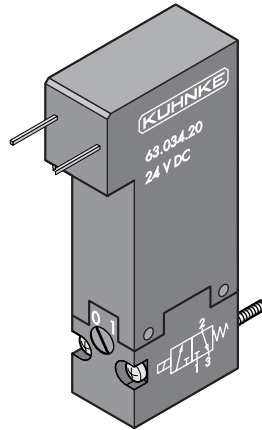
Werkstoffe: Gehäuse (Sockel): Kunststoff PBT
Dichtungen: NBR

Elektr. Anschlussmöglichkeit: - Litze 0,14 mm²
- Stecker

- Steckerstifte
□ 0,64 mm²

Medium:* Gefilterte (5 µm), geölte oder gefilterte nicht geölte Druckluft oder andere gasförmige Medien mit zulässiger Viskosität nach ISO-VG 10.

Sonderausführungen: Durch den Einsatz anderer Werkstoffe sowie Dichtungen aus FPM (Viton) und EPDM können wir viele ein-satzspezifische Anforderungen bezüglich des Mediums realisieren.



10 mm wide, three individual electric connection possibilities.
Non-notching hand operation.

Technical Data:

Nominal voltage: 24 V DC (12 V DC)
Pressure range: 0 - 10 bar
Nominal orifice: 0.7 (0.5; 0.9)
Functions: 2/2 way NC
2/2 way NO
3/2 way NC
3/2 way NO

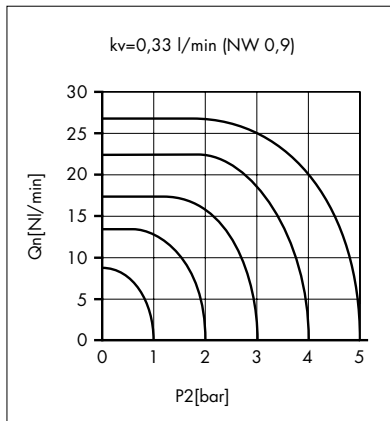
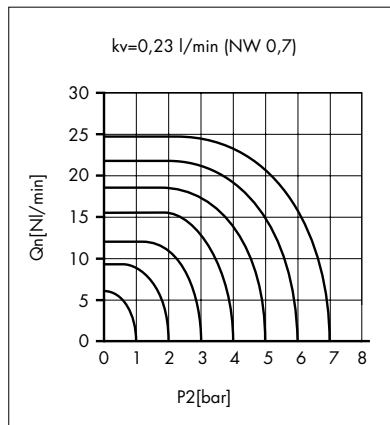
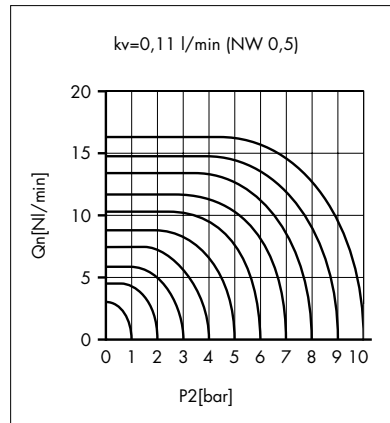
Ambient temperature range:* -10 ° to + 50 °C
Nominal coil power: 1.8 W
Duty cycle: ED = 100 %
Protection classification:

- valve with wire: IP 65 DIN 40 050 at the junction to the solenoid system, flexible wire and assigned pneumatic connections
Materials: housing (base): plastic PBT
seals: NBR

Electrical connections: - wire 0.14 mm²
- plug
- plug pins
□ 0.64 mm²

Operating medium:* 5 micron filtered, lubricated air or non-lubricated compressed air; also suitable for other media conforming to ISO-VG10.

Special versions: We may realise many applications for specific requirements with regard to the agent by using other materials and sealings made of FPM (Viton) and EPDM.



* Siehe Technische Informationen

* See Technical Information

Mikro-Magnetventile Typ 63
 NW 0,5/0,7/0,9
 2/2- und 3/2-Wege Sitzventile
 Direktgesteuert

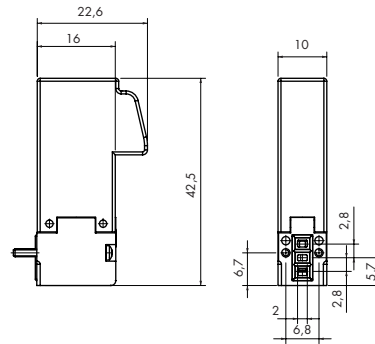
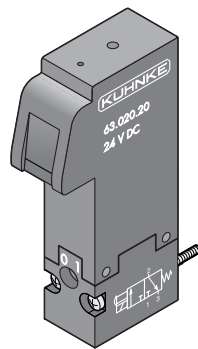


Micro-Solenoid Valves Type 63
 0.5/0.7/0.9 mm Orifice
 2/2 and 3/2 Poppet Valves
 Directional Valves

Bestell-Nr.	ohne Nothandbetätigung			without hand operation		Order No.
Sitzventile	NW [mm]	Max. Druck [bar]		Max. pressure [bar]	NW [mm]	Poppet valves
63.020.10	0,5	10		10	0,5	63.020.10
63.020.20	0,7	7		7	0,7	63.020.20
63.020.30	0,9	5		5	0,9	63.020.30
63.021.20	0,7	7		7	0,7	63.021.20

Stecker*

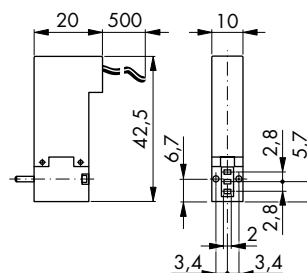
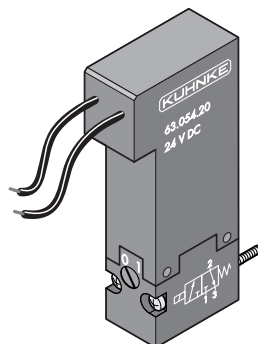
Plug*



Bestell-Nr.						Order No.
Sitzventile	NW [mm]	Max. Druck [bar]		Max. pressure [bar]	NW [mm]	Poppet valves
63.054.10	0,5	10		10	0,5	63.054.10
63.054.20	0,7	7		7	0,7	63.054.20
63.054.30	0,9	5		5	0,9	63.054.30
63.055.20	0,7	7		7	0,7	63.055.20

Litze 0,14 mm²
 Länge 500 mm

Wire 0.14 mm²
 Length 500 mm



* Siehe Zubehör ab Seite 1-208
 Anschlussbild siehe Seite 1-212

* see accessories page 1-208
 Port-sketch see page 1-212

Mikro-Magnetventile Typ 63
 NW 0,5/0,7/0,9
 2/2- und 3/2-Wege Sitzventile
 Direktgesteuert



Micro-Solenoid Valves Type 63
 0.5/0.7/0.9 mm Orifice
 2/2 and 3/2 Poppet Valves
 Directional Valves

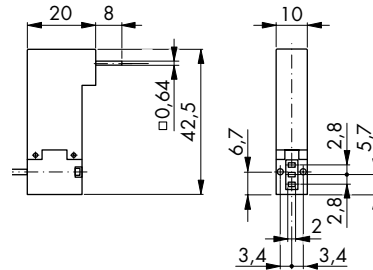
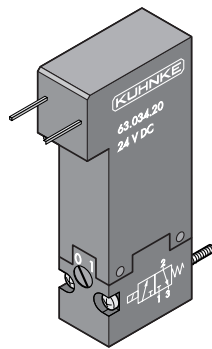
Bestell-Nr.

Order No.

Sitzventile	NW [mm]	Max. Druck [bar]		Max. pressure [bar]	NW [mm]	Poppet valves
63.034.10	0,5	10		10	0.5	63.034.10
63.034.20	0,7	7		7	0.7	63.034.20
63.034.30	0,9	5		5	0.9	63.034.30
63.035.20	0,7	7		7	0.7	63.035.20

Steckerstift \square 0,64

Plug pin \square 0.64



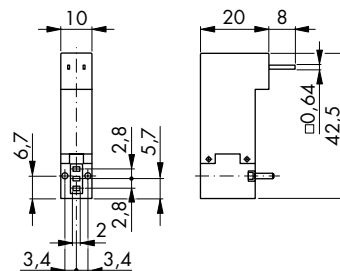
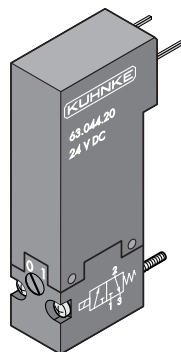
Bestell-Nr.

Order No.

Sitzventile	NW [mm]	Max. Druck [bar]		Max. pressure [bar]	NW [mm]	Poppet valves
63.044.10	0,5	10		10	0.5	63.044.10
63.044.20	0,7	7		7	0.7	63.044.20
63.044.30	0,9	5		5	0.9	63.044.30

Steckerstift \square 0,64

Plug pin \square 0.64



Siehe Zubehör ab Seite 1-208
 Anschlussbild siehe Seite 1-212

see accessories page 1-208
 Port-sketch see page 1-212

Mikro-Magnetventile Typ 68
 NW 1,3/1,6/1,9
 3/2-Wege Sitzventile
 Direktgesteuert



Micro-Solenoid Valves Type 68
 1.3/1.6/1.9 mm Orifice
 3/2 Poppet Valves
 Directional Valves

Baubreite 15 mm, 2 verschiedene elektrische Anschlussmöglichkeiten.

Technische Daten:

Nennspannung: 24 V DC (12 V DC)
 Druckbereich: 0 - 10 bar (Nennweitenabhängig)
 Nennweite: 1,3/1,6/1,9
 Funktion: 3/2 Wege NC

Umgebungstemperatur:* -10 °C bis + 50 °C
 Leistungsaufnahme: 3,0 W
 Einschaltdauer: ED = 100 %

Schutzart:

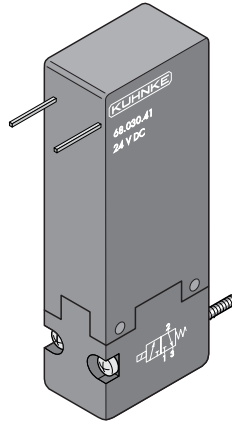
- Ventil mit Litze: IP 65 DIN 40050 am Übergang Magnetsystem, Litze und belegten pneumatischen Anschlüssen

Werkstoffe: Gehäuse (Sockel): Kunststoff PBT
 Dichtungen: FKM

Elektr. Anschlussmöglichkeit:
 - Litze 0,14 mm²
 - Steckerstifte □ 0,64 mm²

Medium:* Gefilterte (5 µm), geölte oder gefilterte nicht geölte Druckluft oder andere gasförmige Medien mit zulässiger Viskosität nach ISO-VG 10.

Sonderausführungen: Durch den Einsatz anderer Werkstoffe sowie Dichtungen aus NBR und EPDM können wir viele ein-satzspezifische Anforderungen bezüglich des Mediums realisieren.



15 mm wide, two individual electric connection possibilities.

Technical Data:

Nominal voltage: 24 V DC (12 V DC)
 Pressure range: 0 - 10 bar (depending on orifice)
 Nominal orifice: 1.3/1.6/1.9
 Function: 3/2 way NC

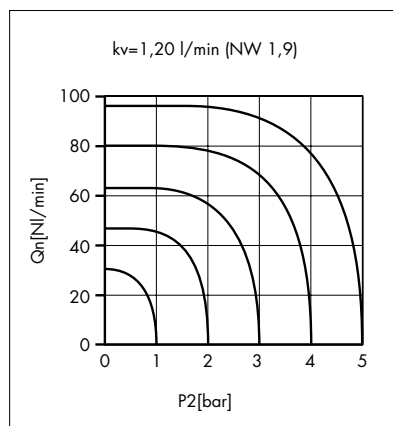
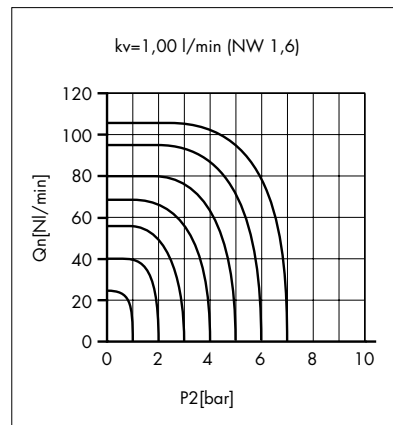
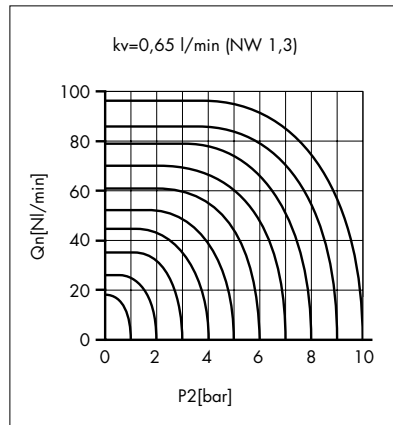
Ambient temperature range:* -10 ° to + 50 °C
 Nominal coil power: 3.0 W
 Duty cycle: ED = 100 %
 Protection classification:

- valve with wire: IP 65 DIN 40 050 at the junction to the solenoid system, flexible wire and assigned pneumatic connections
Materials: housing (base): plastic PBT
 seals: FKM

Electrical-connections:
 - wire 0.14 mm²
 - plug pins □ 0.64 mm²

Operating medium:* 5 micron filtered, lubricated air or non-lubricated compressed air; also suitable for other media conforming to ISO-VG10.

Special versions: We may realise many applications for specific requirements with regard to the agent by using other materials and sealings made of NBR and EPDM.



* Siehe Technische Informationen

* See Technical Information

Mikro-Magnetventile Typ 68
 NW 1,3/1,6/1,9
 3/2-Wege Sitzventile
 Direktgesteuert



Micro-Solenoid Valves Type 68
 1.3/1.6/1.9 mm Orifice
 3/2 Poppet Valves
 Directional Valves

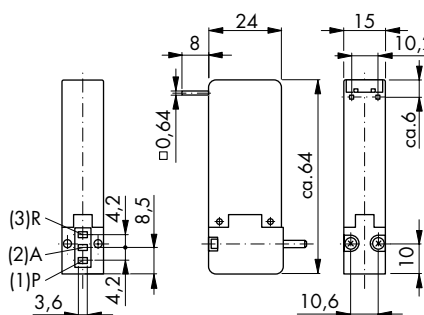
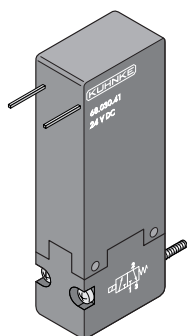
Bestell-Nr.

Order No.

Sitzventile	NW [mm]	Max. Druck [bar]		Max. pressure [bar]	NW [mm]	Poppet valves
68.030.41	1,3	10		10	1.3	68.030.41
68.030.01	1,6	7		7	1.6	68.030.01
68.030.51	1,9	5		5	1.9	68.030.51

Steckerstift \square 0,64

Plug pin \square 0,64



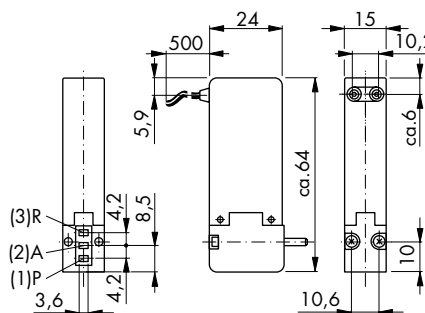
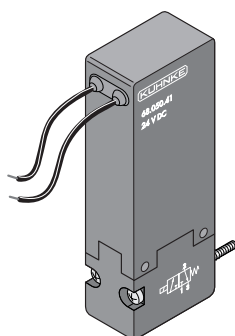
Bestell-Nr.

Order No.

Sitzventile	NW [mm]	Max. Druck [bar]		Max. pressure [bar]	NW [mm]	Poppet valves
68.050.41	1,3	10		10	1.3	68.050.41
68.050.01	1,6	7		7	1.6	68.050.01
68.050.51	1,9	5		5	1.9	68.050.51

Litze 0,14 mm²
 Länge 500 mm

Wire 0.14 mm²
 Length 500 mm



Mikro-Magnetventile Typ 68
 NW 1,3/1,6/1,9
 3/2-Wege Sitzventile
 Direktgesteuert



Micro-Solenoid Valves Type 68
 1.3/1.6/1.9 mm Orifice
 3/2 Poppet Valves
 Directional Valves

Bestell-Nr.

Order No.

Sitzventile	NW [mm]	Max. Druck [bar]		Max. pressure [bar]	NW [mm]	Poppet valves
68.040.41	1,3	10		10	1.3	68.040.41
68.040.01	1,6	7		7	1.6	68.040.01
68.040.51	1,9	5		5	1.9	68.040.51

Steckerstift \square 0,64

Plug pin \square 0.64

