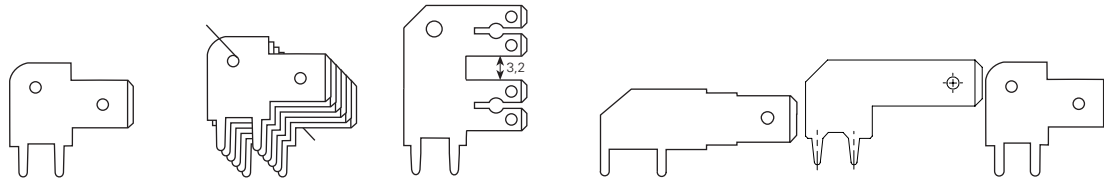


# Steckzungen 6,3 mm Languettes plates Mounting tabs



Artikelnummer Numéro d'article Part-No.	3867a.6	03867a.6	3867x.6	3867v.6	3867ac.4	3867g.6
Bohrung/Trou/Hole	∅ 1.4	∅ 1.4	∅ 1.45	∅ 1.5	∅ 1.5	∅ 1.5
T	4	4	4	3.5	3.7	4
H	15	15	22.5	11.5	14.4	15
A	5	5	5	7.5	5	5
B1	8	8	8	14	9.1	7.9
L1	16.5	16.5	16.2	26	24.1	16.3
L	8.5	8.5	8.2	12	15	8.4
∅D	1.65	1.65	1.65	1.65	1.65	1.65
B	1.4	1.4	1.4	1.4	1.5	1.4
S	0.8	0.8	0.8	0.8	0.8	0.8
Werkzeuge Outils Toolings	27	1046w	28	28	28	27

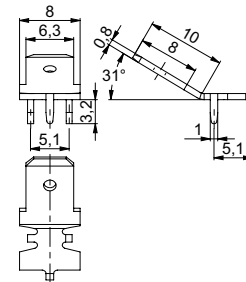
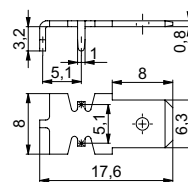
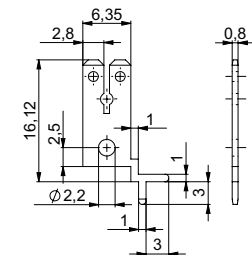
Werkstoff/Matière/Material  
.6 = Messing/laiton/brass

■ = Oberflächen/Surface/Surface-plating  
Seite/page/page 5.011

## Masse im Steckbereich DIN46342, Teil 1

## Dimensions zone d'emboîtement selon DIN46342, partie 1

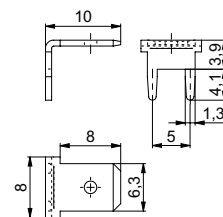
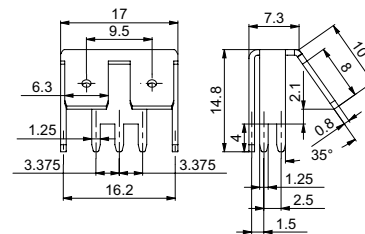
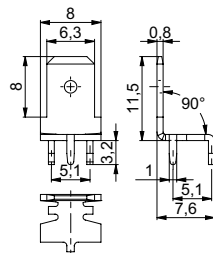
## Dimensions in the tab sector DIN46342, part1



Artikelnummer Numéro d'article Part-No.	3866e.6
Bohrung/Trou/Hole	∅ 1.1

Artikelnummer Numéro d'article Part-No.	3867p.6
Bohrung/Trou/Hole	∅ 1.2

Artikelnummer Numéro d'article Part-No.	3867r.6
Bohrung/Trou/Hole	∅ 1.2



Artikelnummer Numéro d'article Part-No.	3867p90.6
Bohrung/Trou/Hole	∅ 1.2

Artikelnummer Numéro d'article Part-No.	3865x.6
Bohrung/Trou/Hole	∅ 1.3

Artikelnummer Numéro d'article Part-No.	3866b90.6
Bohrung/Trou/Hole	∅ 1.3