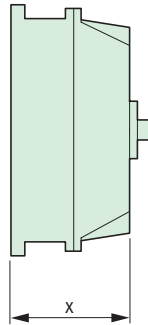
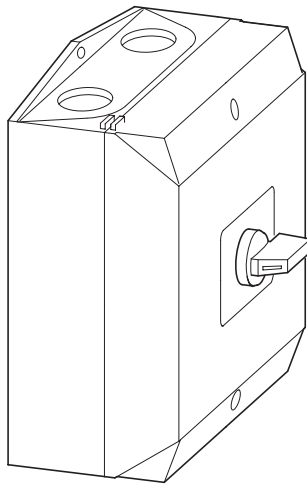


T0-1(2)(3)(4)-.../I1
T0-1(2)(3)(4)-.../I1-RT
T0-1(2)(3)(4)-.../I1/SVB
T0-1(2)(3)(4)-.../I1/SVB-SW



	x [mm]	x [inch]
T0-1(2)-...	75	2.95
T0-3(4)-...	95	3.74



Lebensgefahr durch elektrischen Strom!
 Nur Elektrofachkräfte und elektrotechnisch unterwiesene Personen dürfen die im Folgenden beschriebenen Arbeiten ausführen.

Electric current! Danger to life!

Only skilled or instructed persons may carry out the following operations.

Tension électrique dangereuse !

Seules les personnes qualifiées et averties doivent exécuter les travaux ci-après.

Tensione elettrica: Pericolo di morte!

Solo persone abilitate e qualificate possono eseguire le operazioni di seguito riportate.

¡Corriente eléctrica! ¡Peligro de muerte!

El trabajo a continuación descrito debe ser realizado por personas cualificadas y advertidas.

Электрический ток! Опасно для жизни!

Только специалисты или проинструктированные лица могут выполнять следующие операции.

触电危险!

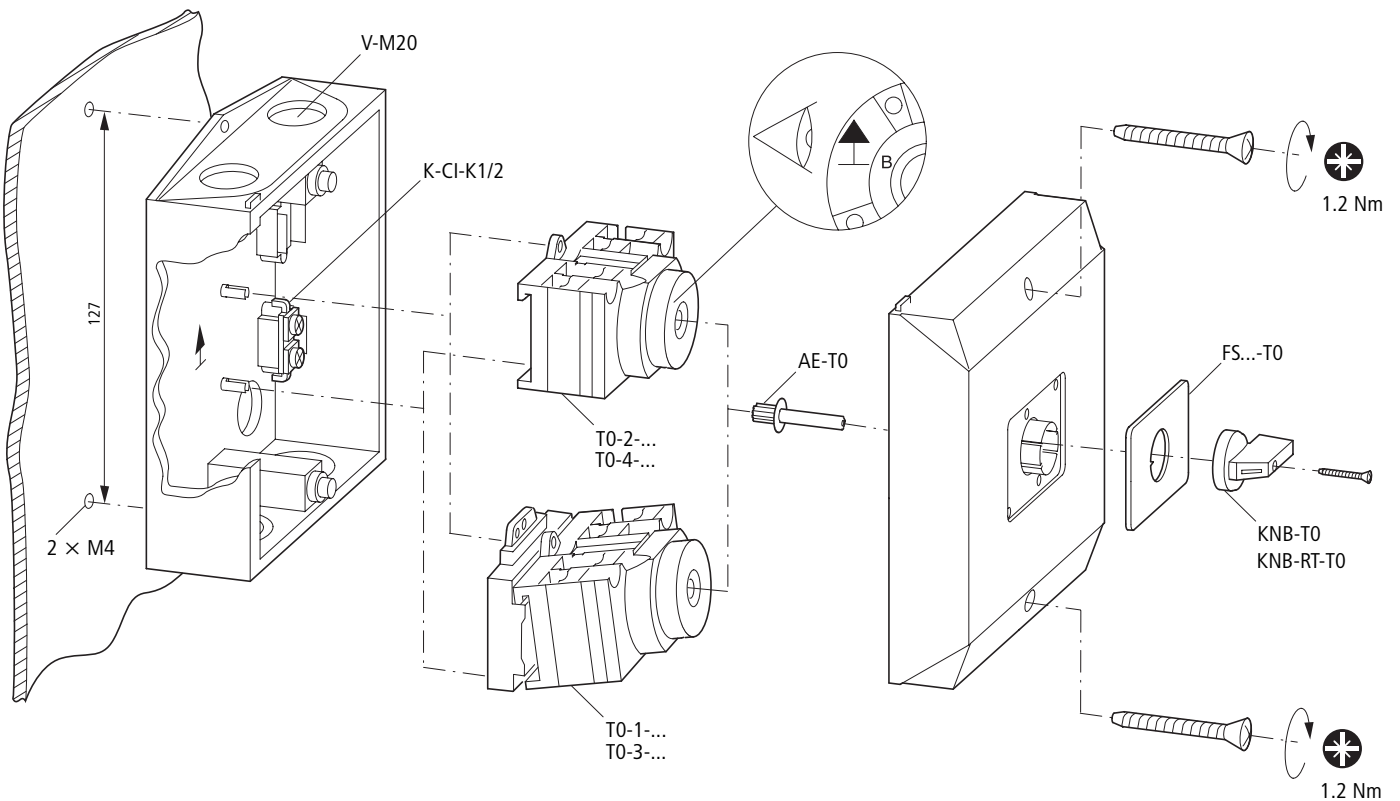
只允许专业人员和受过专业训练的人员进行下列工作。

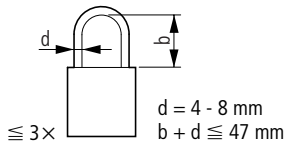
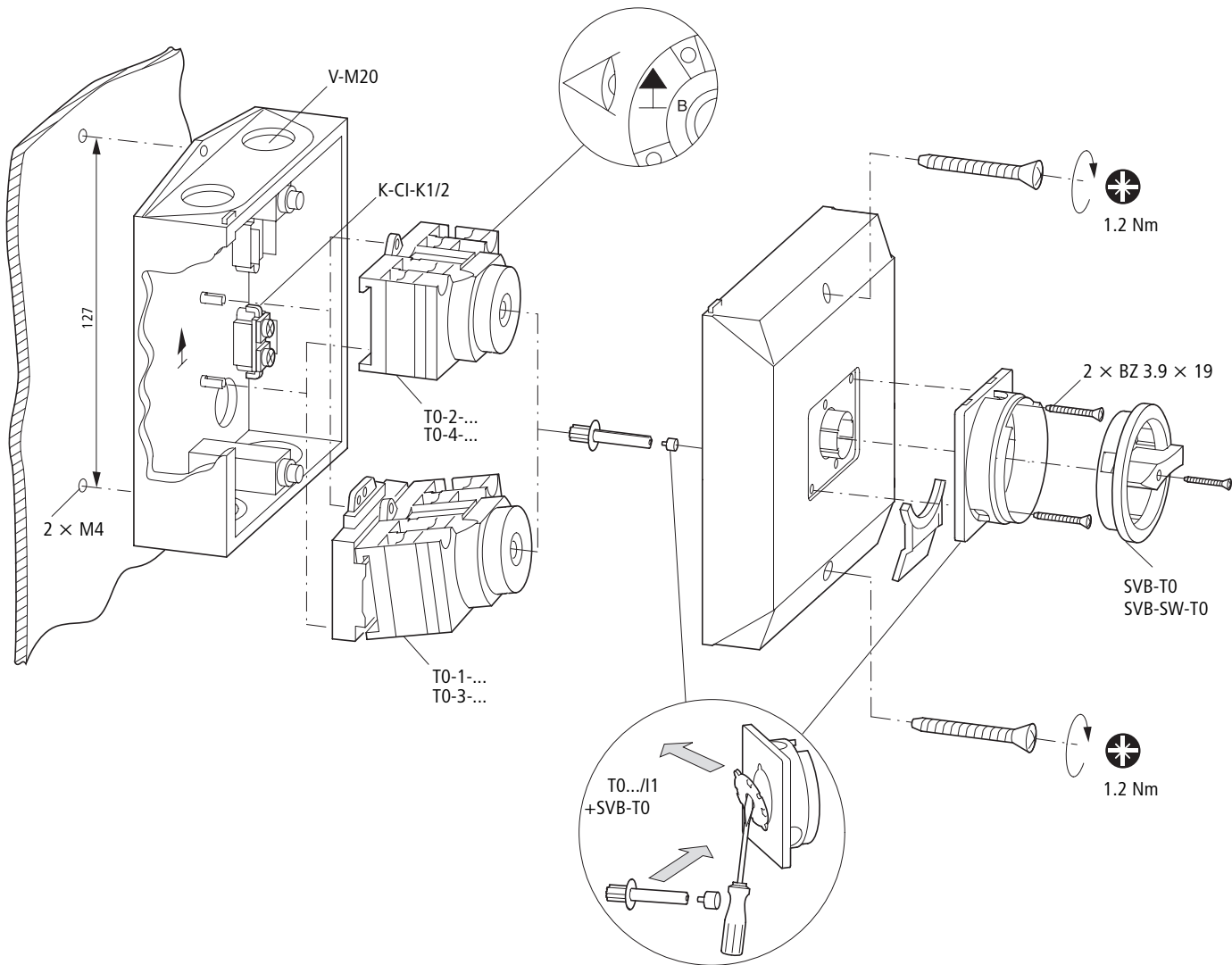




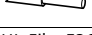

Z 2

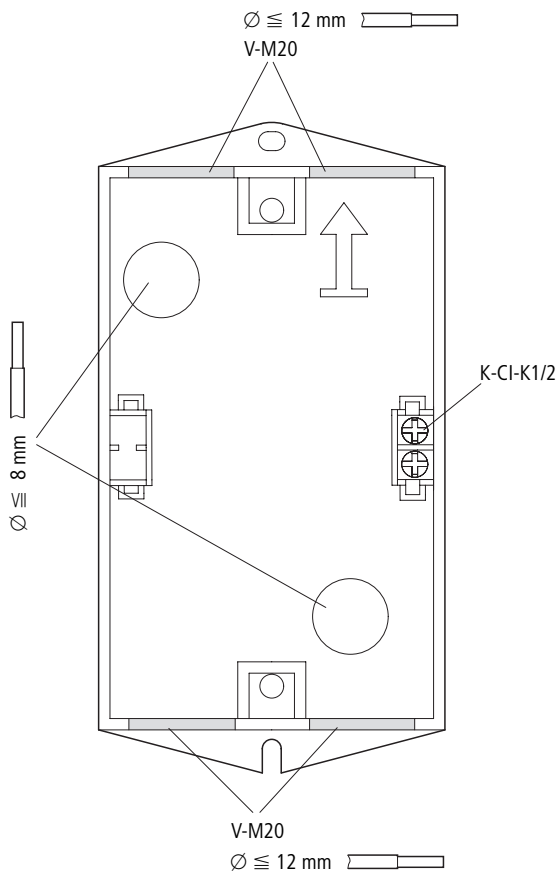
1.0 × 6

T0-.../I1(-RT)

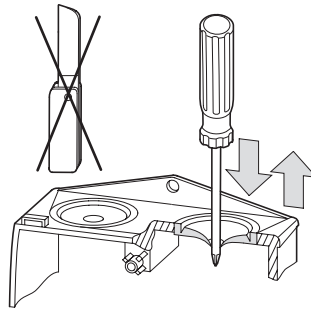




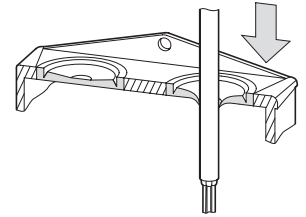
	1 × 0.75 - 1.5 mm ²	1.0 Nm
	2 × 0.75 - 1.5 mm ²	1.0 Nm
	1 × 1.0 - 2.5 mm ²	1.0 Nm
	2 × 1.0 - 2.5 mm ²	1.0 Nm
UL-File: E36 332		
UL	AWG18 - AWG14	1.0 Nm



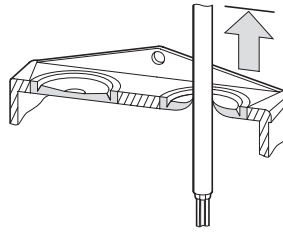
1



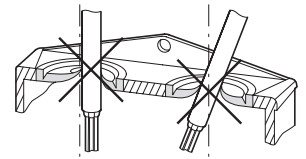
2



3

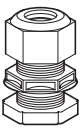


4

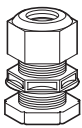


06/05 AWA 1150-1687

V-M20



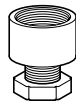
PG13.5



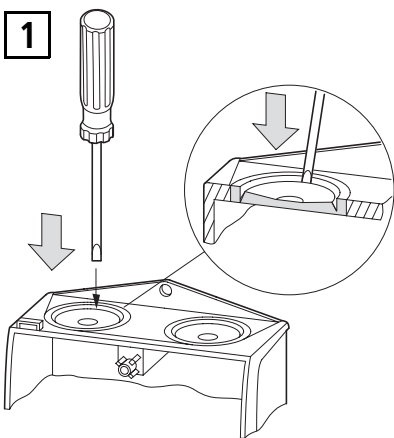
KT-M20



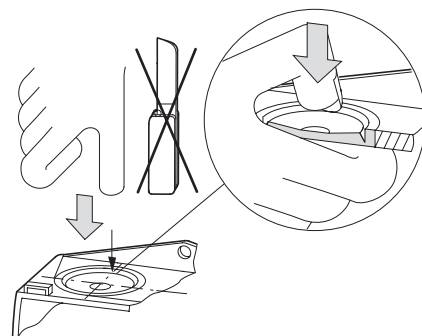
...



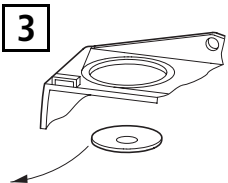
1



2



3

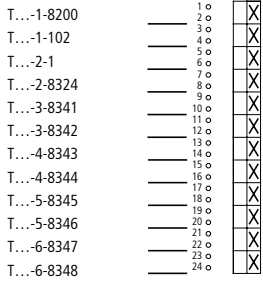


T0, T3

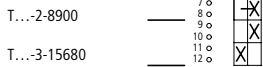
Ein-Aus-Schalter On-Off switches Commutateurs Marche-Arrêt



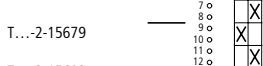
FS 908



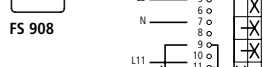
FS 908



FS 908



FS 908



FS 908



Umschalter Change over switches Commutateurs de sélection



FS 684



FS 684



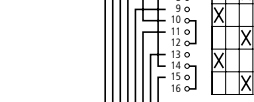
FS 684



T...-4-8213



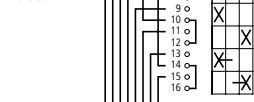
FS 684



T...-4-8294



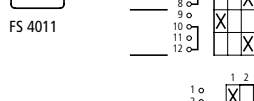
FS 953



T...-1-8214



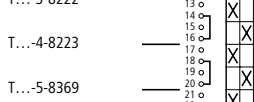
FS 4011



T...-1-8220



FS 943



T...-2-8221



FS 943



Mit Rundschtaltung Complete rotation Commutation sans butée

T...-1-15108



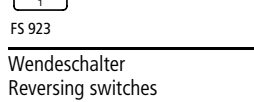
FS 926



T...-1-15109



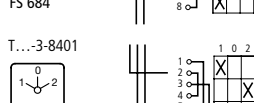
FS 928



T...-1-15111



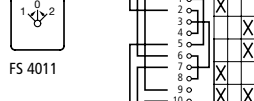
FS 923



T...-2-8400



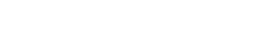
FS 684



T...-3-8401



FS 684



T...-3-8228

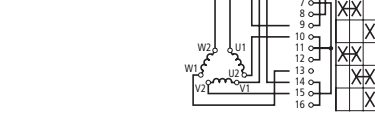
FS 4011

Stern-Dreieck-Schalter Star-delta switches Commutateurs étoile-triangle

T...-4-8410



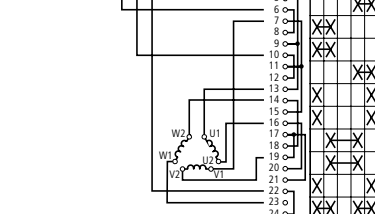
FS 635



T...-6-15877



FS 638

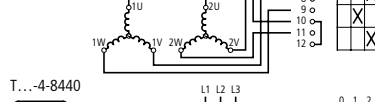


Polumschalter Two-speed switches Commutateurs de pôles

T...-3-8451



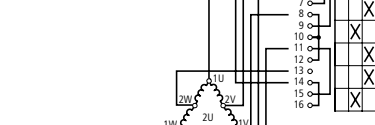
FS 644



T...-4-8440



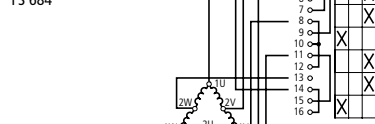
FS 644



T...-4-8441



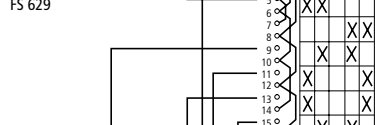
FS 684



T...-5-8453



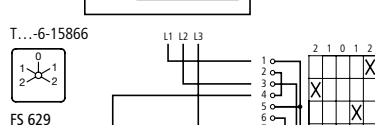
FS 629



T...-6-15866



FS 629



Stufenschalter Step switches Commutateurs à gradins

T...-1-8240



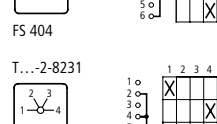
FS 418



T...-2-8260



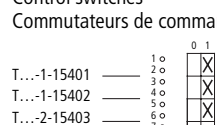
FS 418



T...-3-8280



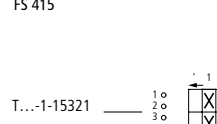
FS 418



T...-2-8230



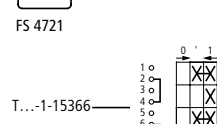
FS 404



T...-2-8231



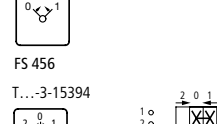
FS 606



T...-2-8241



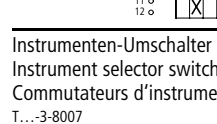
FS 420



T...-2-8242



FS 422



T...-2-8230



FS 404



T...-3-8048



FS 9440



T...-1-15401



FS 415

T...-1-15402

FS 415

T...-2-15403

FS 415

T...-2-15404

FS 415

T...-1-15321

FS 4721

T...-1-15322

FS 4721

T...-2-15323

FS 4721

T...-1-15366

FS 456

T...-2-15367

FS 456

T...-3-15394

FS 458

T...-1-15511

FS 147767

T...-2-15512

FS 147767

T...-3-15513

FS 140660

T...-2-8177

FS 140660

T...-3-8007

FS 1410759

T...-3-8048

FS 9440

T...-3-8048

FS 9440

T...-3-8048

FS 9440

T...-3-8048

FS 9440

T...-3-8048

FS 9440

T...-3-8048

FS 9440

T...-3-8048

FS 9440

T...-3-8048

FS 9440

T...-3-8048

FS 9440

T...-3-8048

FS 9440

T...-3-8048

FS 9440

