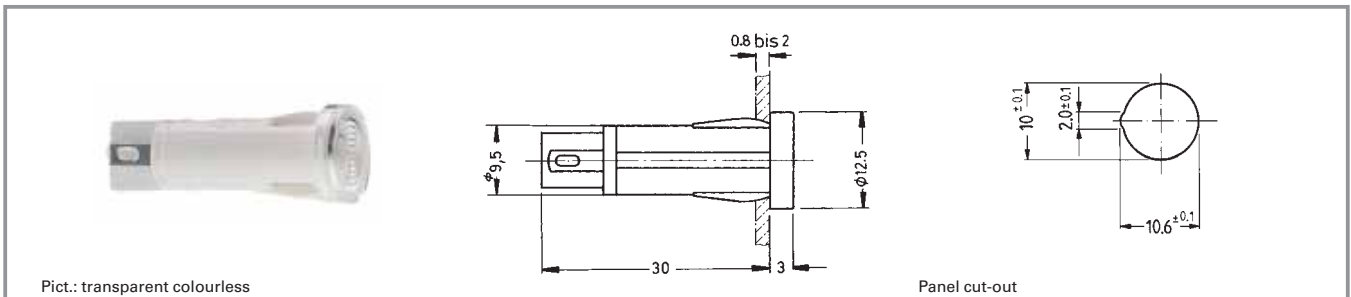


Signal lamps with integrated filament/neon lamp - 10 mm



Technical Data

General information

Form of lens	see order block
Colour of lens	see order block
Diameter of collar	see order block

Dimensions

Length of collar	see order block
Width of collar	see order block
Overall height	3 mm
Mounting depth	30 mm
Mounting hole	10 mm

Mechanical design

Mounting	pressing into hole
Terminals	see order block
Lamp socket	no
Lamp	see order block

Electrical characteristics

Voltage limit max.	see order block
Power limit max.	see order block

Other specifications

Operating life	see order block
Degree of protection from front side	IP40
Weight	2.5 g

3

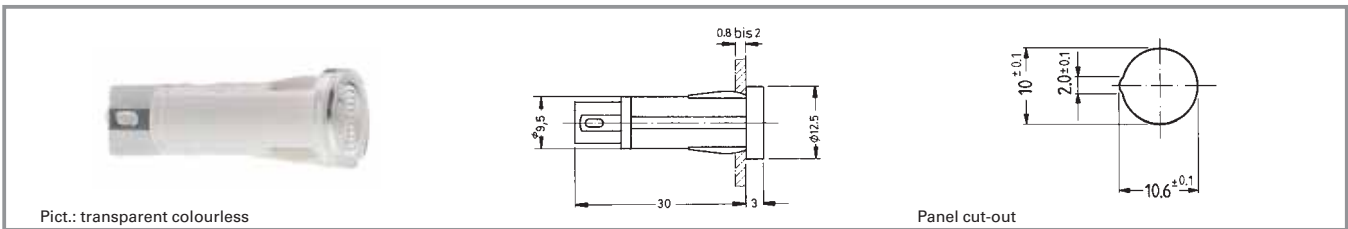
integr.
Lamp

Approvals



VDE 0710
(T85° for filament
and T120° for neon
lamp versions)

Signal lamps with integrated filament/neon lamp - 10 mm, round lens



Pict.: transparent colourless

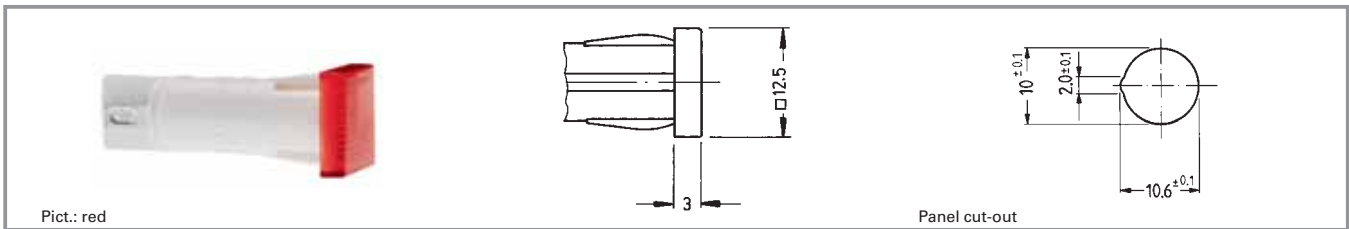
Panel cut-out

Voltage limit max.	Power limit max.	Lamp	Terminals	Operating life	Colour of lens	Order no.
28 V	1.2 W	filament lamp	quick connector 2.8 x 0.8	10,000 h	opaque white	1.69.507.105/0214
28 V	1.2 W	filament lamp	quick connector 2.8 x 0.8	10,000 h	transparent colourless	1.69.507.105/1002
28 V	1.2 W	filament lamp	quick connector 2.8 x 0.8	10,000 h	transparent red	1.69.507.105/1301
28 V	1.2 W	filament lamp	quick connector 2.8 x 0.8	10,000 h	transparent yellow	1.69.507.105/1402
28 V	1.2 W	filament lamp	quick connector 2.8 x 0.8	10,000 h	transparent green	1.69.507.105/1502
28 V	1.2 W	filament lamp	quick connector 2.8 x 0.8	10,000 h	transparent blue	1.69.507.105/1601
230 V	-	neon lamp	quick connector 2.8 x 0.8	-	transparent colourless	1.69.507.117/1002
230 V	-	neon lamp	quick connector 2.8 x 0.8	-	transparent red	1.69.507.117/1301
230 V	-	neon lamp	quick connector 2.8 x 0.8	-	transparent yellow	1.69.507.117/1402
230 V	-	neon glow lamp	quick connector 2.8 x 0.8	-	transparent green	1.69.507.118/1502

Technical data see page 3 - 32

Other voltages and versions with connection cable on request.

Signal lamps with integrated filament/neon lamp - 10 mm, square lens



Voltage limit max.	Power limit max.	Lamp	Terminals	Operating life	Colour of lens	Order no.
28 V	1.2 W	filament lamp	quick connector 2.8 x 0.8	10,000 h	opaque white	1.69.507.125/0214
28 V	1.2 W	filament lamp	quick connector 2.8 x 0.8	10,000 h	transparent colourless	1.69.507.125/1002
28 V	1.2 W	filament lamp	quick connector 2.8 x 0.8	10,000 h	transparent red	1.69.507.125/1301
28 V	1.2 W	filament lamp	quick connector 2.8 x 0.8	10,000 h	transparent yellow	1.69.507.125/1402
28 V	1.2 W	filament lamp	quick connector 2.8 x 0.8	10,000 h	transparent green	1.69.507.125/1502
28 V	1.2 W	filament lamp	quick connector 2.8 x 0.8	10,000 h	transparent blue	1.69.507.125/1601
230 V	-	neon lamp	quick connector 2.8 x 0.8	-	transparent colourless	1.69.507.137/1002
230 V	-	neon lamp	quick connector 2.8 x 0.8	-	transparent red	1.69.507.137/1301
230 V	-	neon lamp	quick connector 2.8 x 0.8	-	transparent yellow	1.69.507.137/1402
230 V	-	neon glow lamp	quick connector 2.8 x 0.8	-	transparent green	1.69.507.138/1502

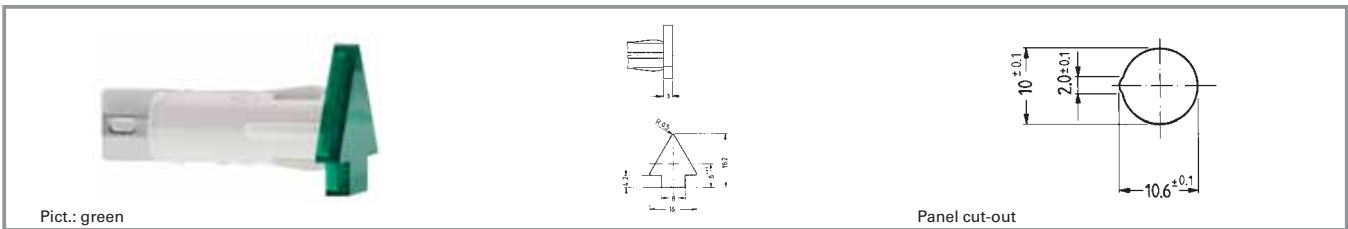
3

integr.
Lamp

Technical data see page 3 - 32

Other voltages and versions with connection cable on request.

Signal lamps with integrated filament/neon lamp - 10 mm, lens in arrow shape



Voltage limit max.	Power limit max.	Lamp	Terminals	Operating life	Colour of lens	Order no.
28 V	1.2 W	filament lamp	quick connector 2.8 x 0.8	10,000 h	opaque white	1.69.507.145/0214
28 V	1.2 W	filament lamp	quick connector 2.8 x 0.8	10,000 h	transparent colourless	1.69.507.145/1002
28 V	1.2 W	filament lamp	quick connector 2.8 x 0.8	10,000 h	transparent red	1.69.507.145/1301
28 V	1.2 W	filament lamp	quick connector 2.8 x 0.8	10,000 h	transparent yellow	1.69.507.145/1402
28 V	1.2 W	filament lamp	quick connector 2.8 x 0.8	10,000 h	transparent green	1.69.507.145/1502
28 V	1.2 W	filament lamp	quick connector 2.8 x 0.8	10,000 h	transparent blue	1.69.507.145/1601
230 V	-	neon lamp	quick connector 2.8 x 0.8	-	transparent colourless	1.69.507.157/1002
230 V	-	neon lamp	quick connector 2.8 x 0.8	-	transparent red	1.69.507.157/1301
230 V	-	neon lamp	quick connector 2.8 x 0.8	-	transparent yellow	1.69.507.157/1402
230 V	-	neon glow lamp	quick connector 2.8 x 0.8	-	transparent green	1.69.507.158/1502

Technical data see page 3 - 32

Other voltages and versions with connection cable on request.

3

integr.
Lamp