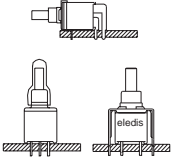


## SERIES 6B

- Sealed Sub-miniature pushbutton



## AGENCY APPROVALS

### IP67

- In conformity with:
- EN 60529: 1991
  - IEC 529: 1989

## CHARACTERISTICS

- Tiny and sealed switch suitable for environmentally hard usage.
- Carries up to 3 Amps @ 120 VAC or 28 VDC.

## SPECIFICATIONS

**Contact Rating:** **S** (silver) - 3A @ 120 VAC or 28 VDC - **A** (gold) or **K** (gold/tin-lead) - 0.4 VA max @ 20 VAC or DC max

**Electrical life:** 50,000 make and break cycles at full load

**Contact Resistance:** 20 mΩ max. initial @ 2-4 VDC - 100 mA, for both silver and gold plated contacts

**Insulation Resistance:** 1000 MΩ min.

**Dielectric Strength:** 1500 VRMS @ sea level

**Operating Temperature:** -30°C to 85°C

## MATERIALS

**Case & bushing:** Glass filled nylon 6/6, flame retardant, heat stabilized (UL94V-0)

**Plunger:** Thermoplastic polyester (UL94V-0) with internal o-ring seal

**Switch support:** Brass, tin plated

**Terminal seal:** Epoxy

## HOW TO ORDER



### ELECTRICAL FUNCTIONS

11	on	(on)
52	off	(on)

### TERMINATIONS

PC	PCB
H9	90° horizontal
H9S	90° horizontal snap-in
V9	90° vertical
V9S	90° vertical snap-in
U2	U bracket 11.68 mm
U2S	U bracket snap-in 11.68 mm

### ACTUATORS

none	Plunger 5.46
FP	Flush Type

### CONTACT MATERIAL

S	Silver
A	Gold
K (Δ)	Gold/Tin-Lead
G	Gold over Silver

### CAP COLOURS OPTIONS

1 (Δ)	White
2	Black (std)
3	Red
4 (Δ)	Orange
5 (Δ)	Yellow
6 (Δ)	Green
7 (Δ)	Blue
8 (Δ)	Brown
9 (Δ)	Gray

### SEALING

E	Seal
---	------

### CAP OPTIONS

C3	Diam. 5.08mm
C4	Diam. 7.62mm

(Δ) Min qty required

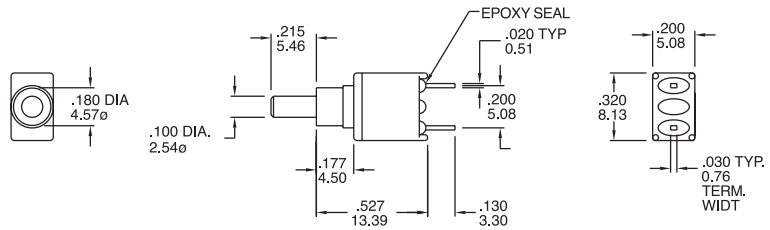


**SERIES 6B**

**ELECTRICAL FUNCTIONS**

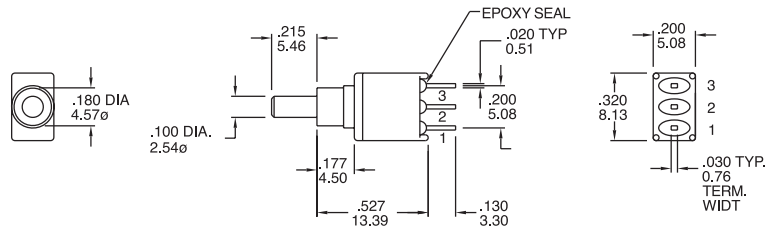
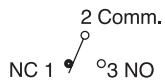
**DIMENSIONS**

SPST	Type
<b>52</b>	<b>off (on)</b>



**Part N° shown: 6B52-PCAE**

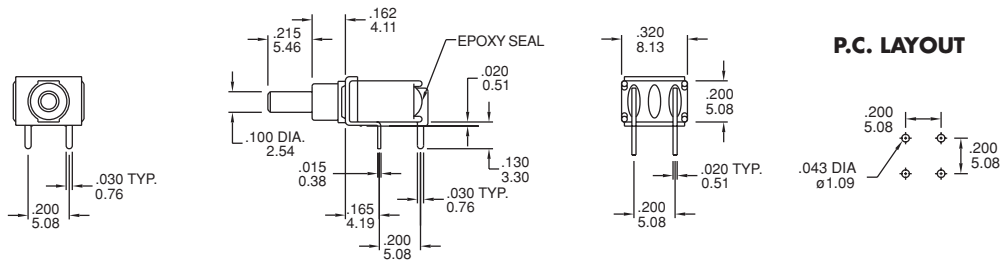
SPDT	Type
<b>11</b>	<b>on (on)</b>
<b>2 - 1</b>	<b>2 - 3</b>



**Part N° shown: 6B11-PCAE**

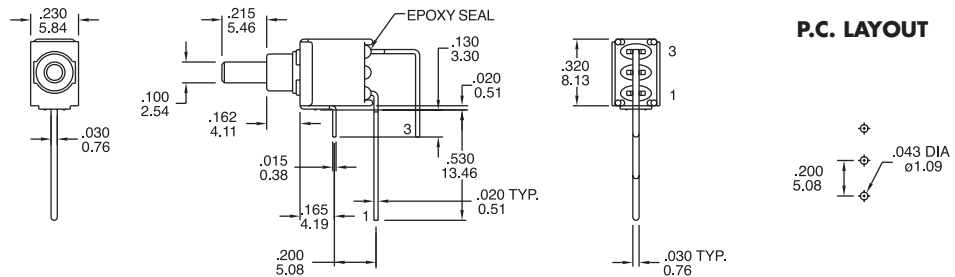
**TERMINATIONS**

**H9**  
**SPST**



**Part N° shown: 6B52-H9AE**

**V9**  
**SPST**



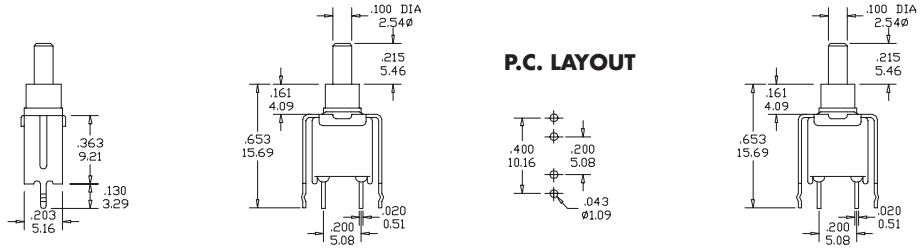
**Part N° shown: 6B52-V9AE**

**SERIES 6B**

**TERMINATIONS**

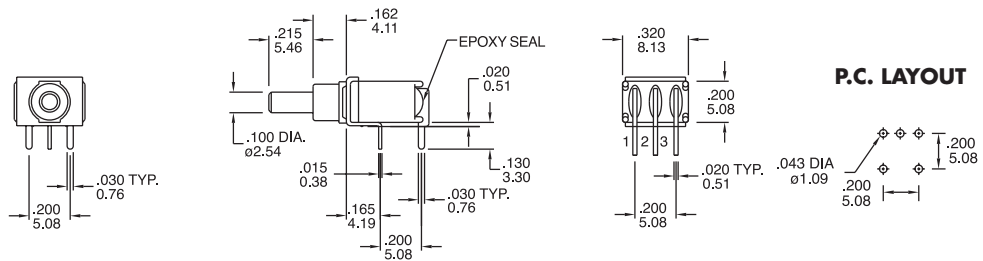
PUSH BUTTONS

**U2  
SPST**



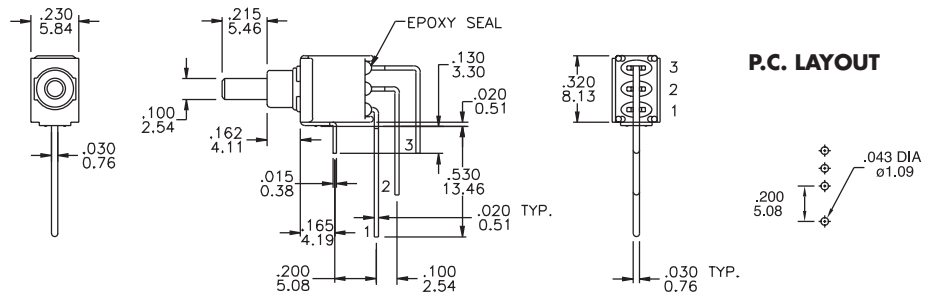
**Part N° shown: 6B52-U2AE**

**H9  
SPDT**



**Part N° shown: 6B11-H9AE**

**V9  
SPDT**



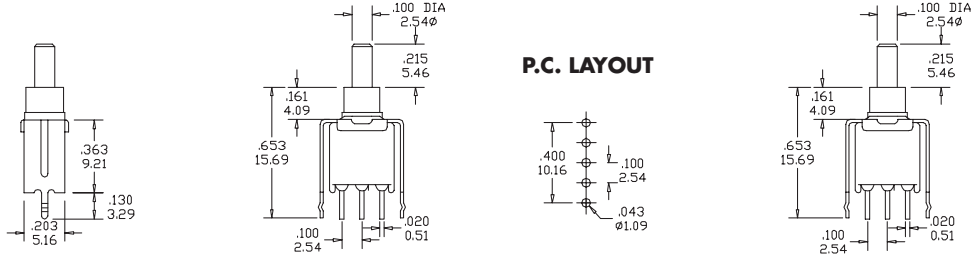
**Part N° shown: 6B11-V9AE**



**SERIES 6B**

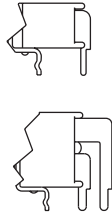
**TERMINATIONS**

**U2  
SPDT**

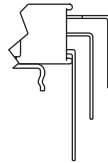


Part N° shown: 6B11-U2AE

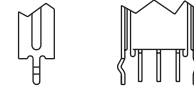
**H9S**



**V9S**

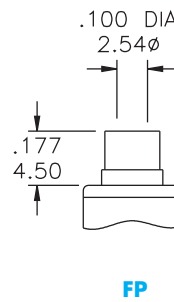
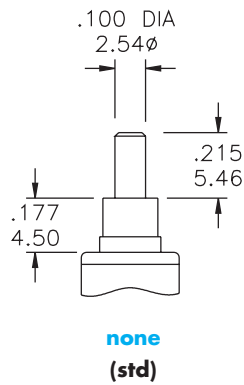


**U2S**



HS9, V9S, US have the same P.C. Mounting but with snap-in bracket.

**PLUNGER**



## SERIES 6B

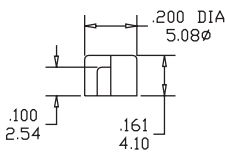
### CONTACT MATERIALS

### CONTACT RATINGS

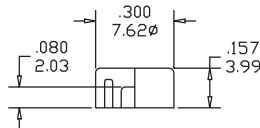
- S** **Moving Contacts:** coin silver, silver plated  
**Center Contacts and all Terminals:** brass, silver plated  
**Rating:** 3 Amps with resistive load @ 120 VAC or 28 VDC  
 1.5 Amps with resistive load @ 250 VAC
- A** **Moving Contacts:** brass, gold plated over nickel plate  
**Terminals:** brass, gold plated over nickel plate  
**Rating:** 0.4 Volts/Amps max @ 20 Volts max (AC or DC)
- G** **Moving Contacts:** gold plating over silver  
**End Terminals:** gold plating over silver  
**Center Terminals:** gold plating over copper alloy, silver plated

PUSH BUTTONS

### CAPS OPTIONS



**C3**



**C4**

#### CAP + FRAME COLOURS OPTIONS

- 1 (Δ) White
- 2 Black (std)
- 3 Red
- 4 (Δ) Orange
- 5 (Δ) Yellow
- 6 (Δ) Green
- 7 (Δ) Blue
- 8 (Δ) Brown
- 9 (Δ) Gray

(Δ) Min qty required

**Part Number**

Colour

### PACKAGING

### MARKING (on products)

### LABELLING (on packaging)

The switches are individually marked with the following information:

- Side 1** TRADE MARK  
 SERIES AND MODEL  
 DATE CODE
- Side 2** RATING  
 CONTACTS

Note: Not all information may be available on some products.

The label on each tray gives full information on the products contained.

P/N: EL.FNC.: Q.TY: DATE CODE:	
<small>Made in Taiwan</small>	
Remarks	

A Bar code indicating Model, Quantity, Date Code enables easy traceability.