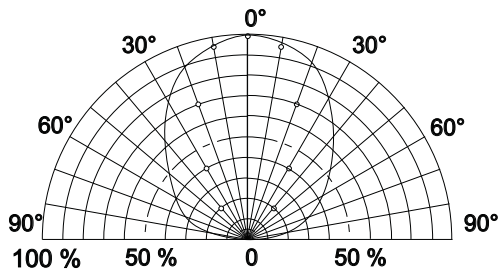
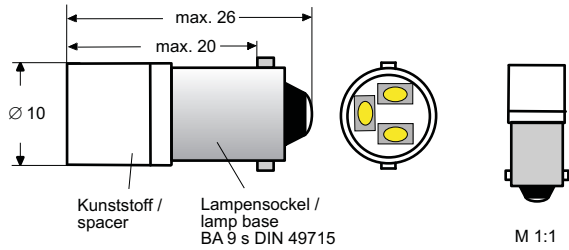
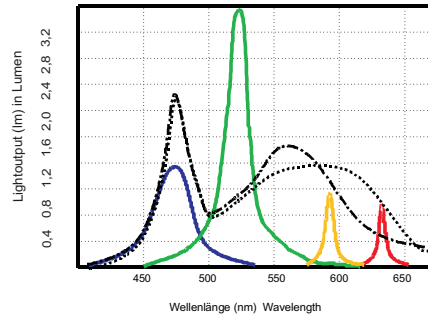


Data Sheet Cluster LED BA9s 24 V AC/DC

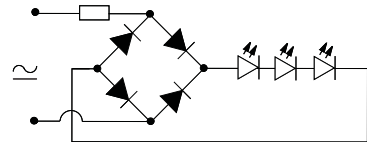


Radiation Pattern

Lightoutput (lm) and Wavelength (nm)



AC/DC Circuit



Number of LED	3
Storage Temperature	- 35 °C + 100 °C
Operating Temperature	- 30 °C + 70 °C
Voltage Tolerance	10%

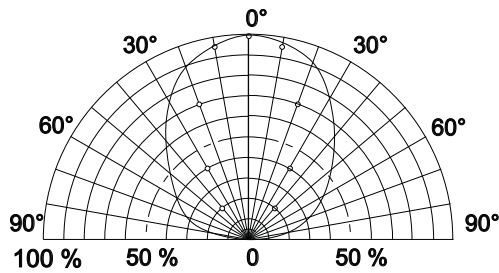
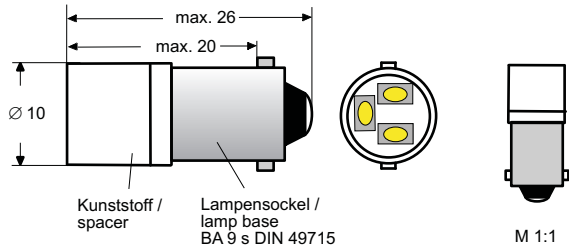
TSL-Code	Voltage		Current [mA]	Wavelength [nm]	Light output Φ_v (luminous flux)	
	[V]				[lm] min.	[lm] typical
913S 13 2415 ER	24	AC/DC	15	red/630	0.3	0.4
913S 13 2415 EY	24	AC/DC	15	yellow/587	0.4	0.6
913S 13 2415 EG	24	AC/DC	15	green/525	1.4	2.0
913S 13 2415 EB	24	AC/DC	15	blue/470	0.7	1.0
913S 13 2415 WS	24	AC/DC	15	white/x=0,31 y=0,32	4,8	6,8
913S 13 2415 WWS	24	AC/DC	15	warm white	2.5	3.6

Typical Light Output in Lumen (lm), Tolerance +/- 25%

				Maßstab 1:1		(Gewicht)
				(Werkstoff, Halbzeug) (Rohteil-Nr) (Modell- oder Gesenk-Nr)		
		Datum	Name		Cluster LED Ba9s AC/DC Type	
Bearb.	17.02.2010	Müller				
Gepr.	00.00.00					
Norm						
				© TAUNUSLICHT		Blatt
						Blätter
Zust.	Änderung	Datum	Name	Ursprung	Ersatz für:	Ersatz durch:

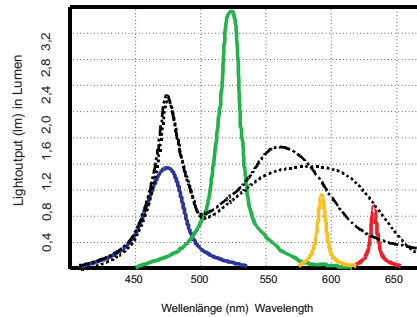
Data Sheet Cluster LED BA9s 230 V AC and 110 - 130 V AC with internal DIAC

Reduction of LED glowing in off status up to 30 V AC

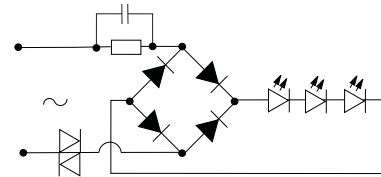


Radiation Pattern

Lightoutput (lm) and Wavelength (nm)



AC Circuit



Number of LED: 3
Storage Temperature: - 35 °C + 100 °C
Operating Temperature: - 30 °C + 70 °C
Voltage Tolerance: 10%

TSL-Code	Voltage		Current [mA]	Wavelength [nm]	Light output Φ_v (luminous flux)	
	[V]				[lm] min.	[lm] typical
913S 13 1310 ER-D	110 -130	AC	10	red/630	0,1	0,2
913S 13 1310 EY-D	110 -130	AC	10	yellow/587	0,2	0,3
913S 13 1310 EG-D	110 -130	AC	10	green/525	0,7	1,0
913S 13 1310 EB-D	110 -130	AC	10	blue/470	0,3	0,4
913S 13 1310 WS-D	110 -130	AC	10	white/ $x=0,31 y=0,32$	2,5	3,5
913S 13 1310 WWS-D	110 -130	AC	10	warm white	1,4	2,0
913S 13 2310 ER-D	230	AC	10	red/630	0,1	0,2
913S 13 2310 EY-D	230	AC	10	yellow/587	0,2	0,3
913S 13 2310 EG-D	230	AC	10	green/525	0,7	1,0
913S 13 2310 EB-D	230	AC	10	blue/470	0,3	0,4
913S 13 2310 WS-D	230	AC	10	white/ $x=0,31 y=0,32$	2,5	3,5
913S 13 2310 WWS-D	230	AC	10	warm white	1,4	2,0

Typical Light Output in Lumen (lm), Tolerance +/- 25%

				Maßstab 1:1		(Gewicht)	
				(Werkstoff, Halbzeug) (Rohteil-Nr) (Modell- oder Gesenk-Nr)			
		Datum		Name			
		Bearb. 17.02.2010		Müller			
		Gepr. 00.00.00					
		Norm					
				Cluster LED Ba9s AC Type			
				Blatt Blätter			
Zust.	Änderung	Datum	Name	Ursprung	Ersatz für:	Ersatz durch:	

