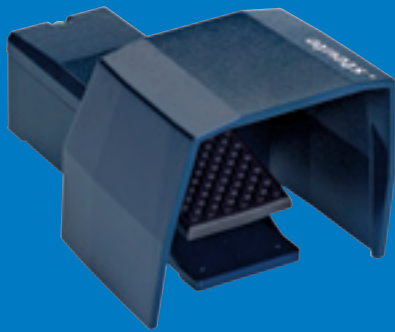


Foot switches // Series GFS

Features/Options

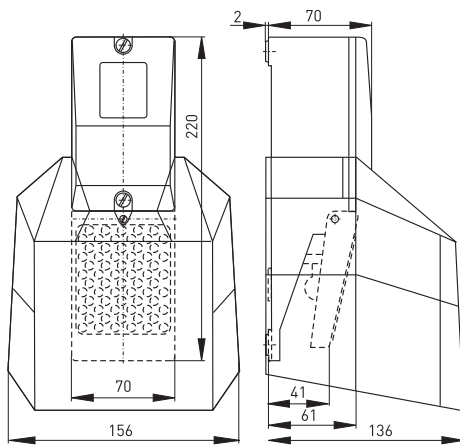
- With protective shield
- Max. 4 contacts
- Metal enclosure
- High level of stability
- Low pedal height
- Wiring compartment
- Ex version available
- Available with mechanical interlock (only for slow action S)
- Available with special finish in RAL colour tones

// GFS



Technical data

Standards	IEC/EN 60947-5-1
Enclosure	aluminium die-cast, enamel finish, RAL 5011
Cover	-
Pedal	glass-fibre reinforced thermoplastic
Protective shield	aluminium die-cast, enamel finish, RAL 5011
Termination	screw terminals
Wire cross-section	max. 2.5 mm ² (incl. conductor ferrules)
Cable entry	M20 x 1.5
Contact material	silver
Protection class	IP 65 to EN 60529
Switching system	slow or snap action with double break, positive break NC contact ⊖
Switch insert	slow action: 2 contacts: ES 60 GF 4 contacts: ES 40 GF snap action: 2 and 4 contacts: ZS 232
Utilisation category	AC-15
I_e/U_e	slow action: 4 contacts: 6 A/400 VAC 2 contacts: 16 A/400 VAC snap action: 2 contacts: 4 A/230 VAC; 2.5 A/400 VAC; 1 A/500 VAC
Max. fuse rating	slow action: 4 contacts: 6 A gL/gG D-fuse 2 contacts: 16 A gL/gG D-fuse snap action: 4 A gL/gG D-fuse
Ambient temperature	- 25 °C ... + 80 °C
Mechanical life	> 1 million operations
Approvals	cULus



Contact variants: Travel/contacts

	Snap action	Slow action
1 NC/1 NO contact	GFSM 10/1S 	GFS 10/1S
2 NC/2 NO contacts	GFSM 20/2S 	GFS 20/2S

Ordering details

GFSM K 10/1S FST

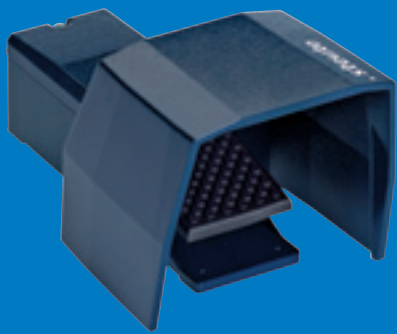
- Foot rest, TST carrying handle
- 1 NC/1 NO contact (20/2S, 10/3S), other configurations possible
- Pedal Cover
- M Snap action (without M slow action)
- S Protective shield
- Series

Foot switches

// Series GFS, variants

- Features/Options**
- With pressure point: 2-step switching
 - 4 contacts
 - Metal enclosure
 - With protective shield
 - High level of stability
 - Low pedal height
 - Wiring compartment
 - Available with mechanical interlock
 - Available with special finish in RAL colour tones

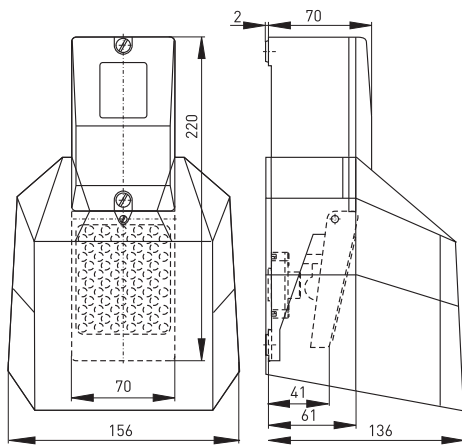
// GFS D



Technical data

Standards	IEC/EN 60947-5-1
Enclosure	aluminium die-cast, enamel finish, RAL 5011
Cover	-
Pedal	glass-fibre reinforced thermoplastic
Protective shield	aluminium die-cast, enamel finish, RAL 5011
Termination	screw terminals
Wire cross-section	max. 2.5 mm ² (incl. conductor ferrules)
Cable entry	M20 x 1.5
Contact material	silver
Protection class	IP 65 to EN 60529
Switching system	slow action with double break, positive break NC contact ⊖
Switch insert	ES 40 GF
Switching element	2-step switching: 1 NC/1 NO contact pressure point: 1 NC/1 NO contact
Actuating force	aprox. 240 N
Utilisation category	AC-15
I_e/U_e	6 A/400 VAC
Max. fuse rating	6 A gL/gG D-fuse
Ambient temperature	- 25 °C ... + 80 °C
Mechanical life	> 1 million operations
Approvals	cULus

20



Contact variants: Travel/contacts

	Slow action
1 NC/1 NO contact	GFS 10S D 10S

Ordering details

GFS 10S D 10S

Contacts 1NC/1NO contact
Pressure point
Contacts 1NC/1NO contact,
other configurations possible
S Protective shield
Series

