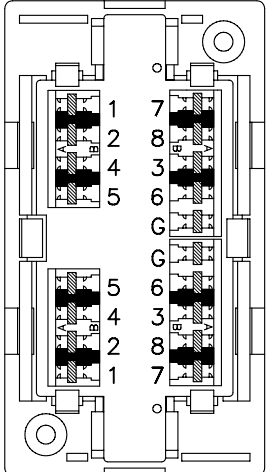
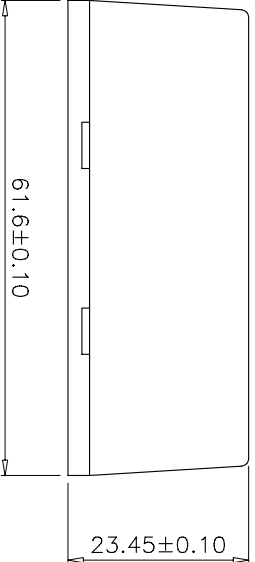
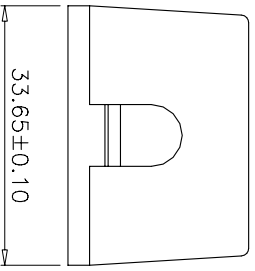
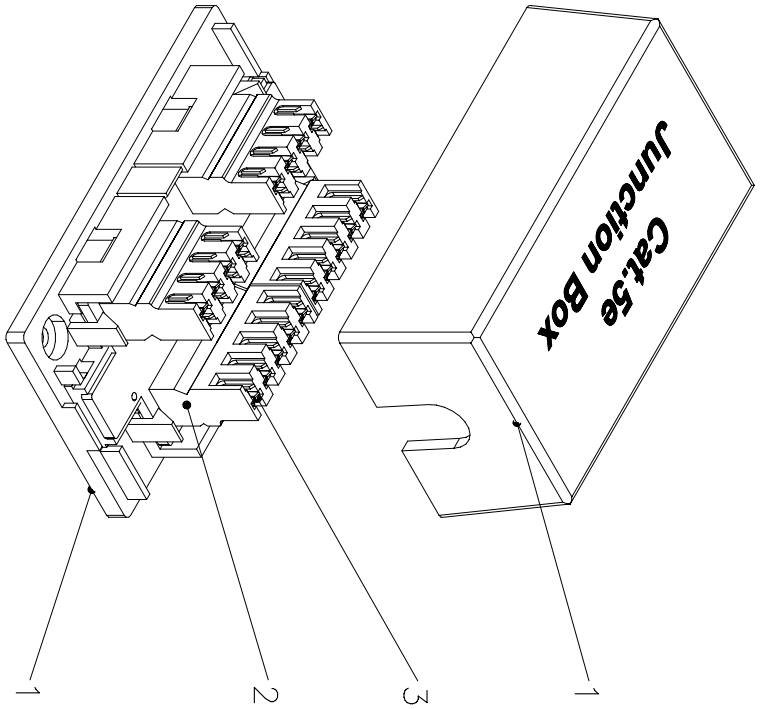
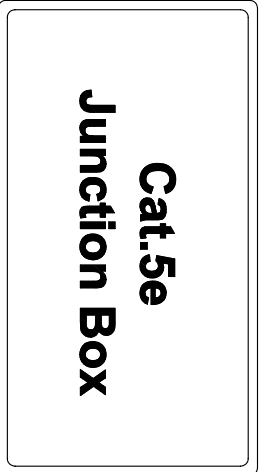


1 2 3 4 5 6



Specification:

Material :

1. Housing : ABS UL 94V-0.
2. IDC Housing : PC, UL 94V-2.
3. IDC Terminal material & finished :
 3-1. Phosphor Bronze with 50 micro-inch Tin-Lead plated over 50-60 micro-inch Nickel plated.
 3-2. Use for 22-26 AWG solid and Stranded wires.

Performance :

- a. The IDC color codes combine two wirings of T568A & T568B.
- b. Operation Temperature : -40°C to 80°C.
- c. Durability :
 IDC : Max. 200 punching times.
- d. The Cat.5e performance is in compliance with the ANSI/TIA/EIA 568 B.2 standard.

1 2 3 4 5 6

GENERAL TOLERANCE OF DIMENSIONS	±0.005
XXXX	±0.05
XXX	±0.1
XX	

DRAWING CHECK	25.MAR.2004	YTY	Michelle
APPROVAL	25.MAR.2004	Jaimy	
DATE		NAME	ITEM NO.: JE316-CEUS/WH

SCALE	1/1 (A4)	UNIT	mm	DES.:	Cat.5e Junction Box Unshielded
-------	----------	------	----	-------	--------------------------------

DRAWING NO.	JE316-CEUS-WH(SA1)
DRAWING CLASSIFICATION	S SHEET 1 OF 1

