

DEVELOPMENT BOARD ENCLOSURES

RASPBERRY PI STYLE ENCLOSURES

Raspberry Pi B+ Enclosures

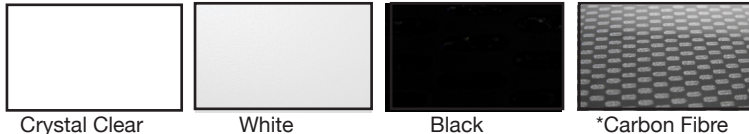
No screws, no glue – just add your **Raspberry Pi** filling!

- Designed to house the **Raspberry Pi B+** via clip-in grooves - **NO SCREWS REQUIRED!**
- All cut-outs are pre-cut into the case - **NO MODS REQUIRED!**
- I/O Connector can be accessed through a slot in the base of the enclosure
- Supplied with rubber feet
- Gloss Finish
- L 89.4mm x W 62.4mm x H 32mm

Material:

- Thickness 3mm: HB Rated
- Coloured Materials: High Impact Polystyrene (HIPS)
- Carbon Fibre Finish: Acrylic Capped ABS

Available Gloss Finish colours:



Crystal Clear

White

Black

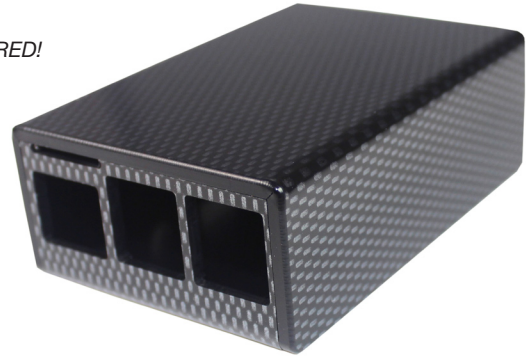
*Carbon Fibre

* Carbon Fibre Finish: Acrylic Capped ABS

Other colours available upon request



CB PART NO.	COLOURS
CBRPP-CLR	Crystal Clear
CBRPP-WHT	White
CBRPP-BLK	Black
CBRPP-CAR	Carbon Fibre



Raspberry Pi B+ not included

UNIVERSAL
ENCLOSURES

HAND
HELD
CASES

HEAVY
DUTY
ENCLOSURES

DIN
RAIL
BOXES

INTERFACE
SUPPORTS

CONTROL
STATIONS

DIECAST
& METAL
BOXES

DESKTOP &
INSTRUMENT
CASES

POTTING
BOXES

19"
ENCLOSURES

19"
CABINETS

DEVELOPMENT
BOARD
ENCLOSURES

CUSTOM
SIZED
ENCLOSURES

CUSTOM
SERVICES