

Distinctive Characteristics

Optional caps in different colors to vary appearance as needed.

Low operating force for ease of actuation.

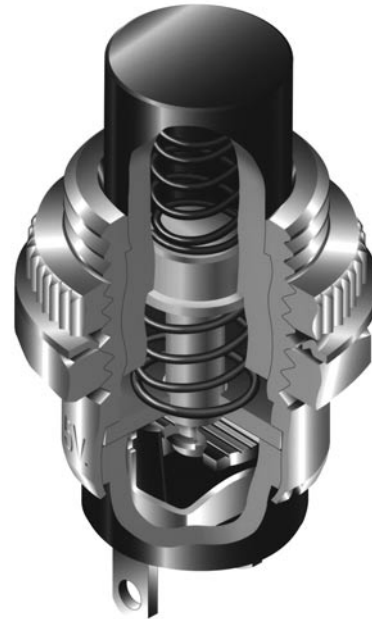
Rear panel bushing mount with compact behind panel dimension.

Internal antijamming feature to protect the contacts from damage due to excessive force on the plunger.

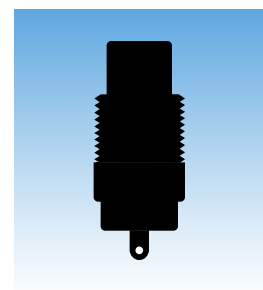
Low cost device of rugged one-piece bushing and housing construction.

Reliability of construction with an internal guide to maintain contact alignment.

Epoxy sealed terminals.



Actual Size



General Specifications

Electrical Capacity (Resistive Load)

Power Level: 3A @ 125V AC or 2A @ 250V AC or 2A @ 30V DC for silver
Logic Level: 0.4VA max. @ 28V AC/DC max. for gold
 (Applicable Range 0.1mA ~ 0.1A @ 20mV ~ 28V)
 Note: Find additional explanation in Supplement section.

Other Ratings

Contact Resistance: 10 milliohms maximum for silver;
 20 milliohms maximum for gold
Insulation Resistance: 200 megohms minimum @ 500V DC
Dielectric Strength: 1,000V AC minimum between contacts & between contacts & case for 1 minute minimum
Mechanical Life: 30,000 operations minimum
Electrical Life: 10,000 operations minimum
Nominal Operating Force: 4.90N
Travel: Normally Open
 Total Travel .088" (2.24mm)
 Normally Closed
 Total Travel .088" (2.24mm)

Materials & Finishes

Plunger: Phenolic resin
Bushing: Brass with nickel plating
Case: Phenolic resin
Movable Contactor: Copper with silver or gold plating
Stationary Contacts: Copper with silver or gold plating
Terminals: Copper with silver or gold plating

Environmental & Installation Data

Operating Temp Range: -10°C through +70°C (+14°F through +158°F)
Soldering Time & Temperature: 3 seconds max. @ 350°C max. for manual soldering or
 5 seconds @ 270°C for solder pot
 Note: Find additional processing data in Supplement section.

Standards & Certifications



UL Recognized: Models rated 3A @ 125V AC & 2A @ 250V AC.
 Single pole: Momentary action circuit with solder lug terminations.
 UL File Number: WOYR2.E44145; add "/U" to end of part number to order UL mark on switch.



CSA Certified: SB series rated 3A @ 125V AC & 2A @ 250V AC.
 Single pole: Momentary action circuit with solder lug terminations.
 CSA File Number: 023535-0-000; add "/C" to end of part number to order CSA mark on switch.

TYPICAL SWITCH ORDERING EXAMPLE

SB40 **11NO** **M**

POLE & CIRCUITS

Normally Open

11NO	SPST	OFF	(ON)
-------------	------	-----	------

Normally Closed

11NC	SPST	ON	(OFF)
-------------	------	----	-------

() = Momentary

PLUNGER COLORS

No Code	Black
C	Red

CONTACT MATERIALS & RATINGS

No Code	Silver Contacts 3A @ 125V AC or 2A @ 250V DC
G	Gold Contacts 0.4VA max. @ 28V AC/DC max.

BUSHINGS

M	Metric Threaded M12 P1
H	Inch Threaded 15/32-32 NS

SLIP-ON CAP & COLORS

No Code	Without Cap
2A	Black
2B	White
2C	Red
2E	Yellow
2F	Green
2G	Blue

IMPORTANT:

Switches are supplied without UL & CSA markings unless specified. Specific models & ratings noted on General Specifications page.

DESCRIPTION FOR TYPICAL ORDERING EXAMPLE

SB4011NOM

Standard Black Plunger without Slip-on Cap

SPST OFF-(ON)
Normally Open Circuit



Metric Threaded Bushing

Silver Contacts with 3-Amp Rating

POLE & CIRCUITS

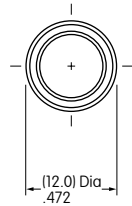
Pole	Model	Plunger Position () = Momentary		Connected Terminals		Throw & Switch Schematics
		Normal	Down	Normal	Down	
SP	SB4011NO	OFF	(ON)	OPEN	1-2	Note: Terminal numbers are not actually on the switch. SPST NO NC
	SB4011NC	ON	(OFF)	1-2	OPEN	

TYPICAL SWITCH DIMENSIONS

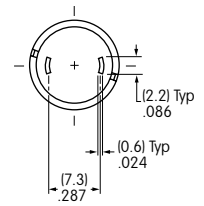
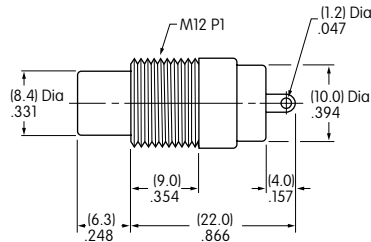
Metric Bushing



SB4011NOM

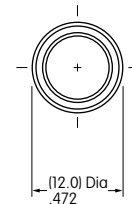


SB4011NOM

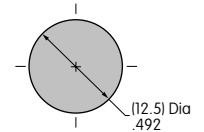
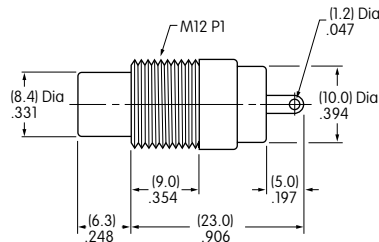


Hardware provided:
 1 AT504 Knurled Face Nut;
 1 AT508 Lockwasher;
 1 AT527M Hex Mounting Nut

Details in Hardware & Accessories section.



SB4011NCM



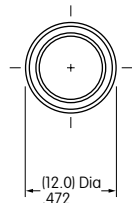
.047" (1.2mm) diameter terminal hole accommodates 1 solid 18-gauge wire.

Panel Thickness: .157" (4.0mm)

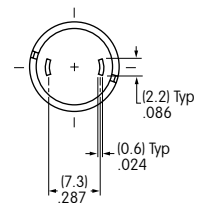
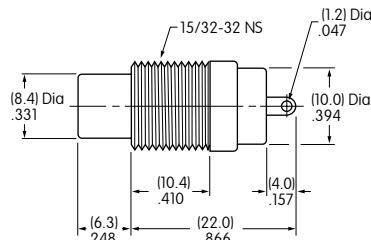
Inch Bushing



SB4011NCH

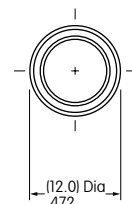


SB4011NOH

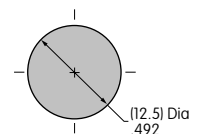
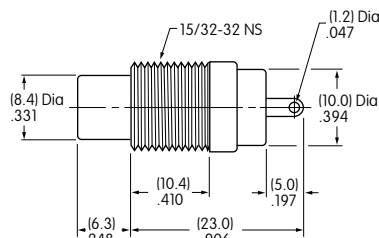


Hardware provided:
 2 AT503H Hex Mounting Nuts;
 1 AT508 Lockwasher

Details in Hardware & Accessories section.



SB4011NCH



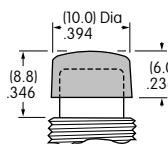
.047" (1.2mm) diameter terminal hole accommodates 1 solid 18-gauge wire.

Panel Thickness: .157" (4.0mm)

SLIP-ON CAP & COLORS

AT422
.394" (10.0mm) Diameter Cap

Material: Polyethylene
 Finish: Matte



2A

Black

2C

Red

2F

Green

2B

White

2E

Yellow

2G

Blue